



1 ਹੇਠ ਲਿਖੇ ਪੈਰੇ ਨੂੰ ਪੜ੍ਹ ਕੇ ਪ੍ਰਸ਼ਨਾਂ ਦੇ ਉੱਤਰ ਦਿਓ।

(6)

ਲੋਕ ਵਿਖਾਵੇ ਦੇ ਕਾਰਨ ਮਨਾਂ ਵਿੱਚ ਮੋਹ ਪਿਆਰ ਦੇ ਘਟਣ ਕਰਕੇ ਘਰ ਘੱਟ ਰਹੇ ਹਨ। ਵਿਆਹ ਸ਼ਾਦੀ ਦੇ ਵਿੱਚ ਹਿੰਸਾ - ਪਾਉਣ ਵਾਲਾ ਇੱਕ ਅਦਭੁਤ ਪਾਤਰ ਹੁੰਦਾ ਹੈ, ਵਿਚੋਲਾ। ਭਾਨੀ ਮਾਰ ਦਾ ਉਲਟਾ ਰੂਪ। ਖੈਰ ਕੁਝ ਵੀ ਹੋਵੇ ਵਿਚੋਲਗੀ ਇੱਕ ਉਸਾਰੂ ਕਰਤੱਵ ਹੈ ਜਿਸ ਨੂੰ ਜਣਾ ਖਣਾ ਨਹੀਂ ਨਿਭਾਅ ਸਕਦਾ। ਦੋਹਾਂ ਧਿਰਾਂ ਦੀਆਂ ਤੱਤੀਆਂ-ਠੰਡੀਆਂ ਸੁਣਨ ਤੋਂ ਇਲਾਵਾ ਜੁਲਾਹੇ ਦੀ ਨੜੀ ਵਾਂਗ ਏਧਰੋਂ-ਉਪਰੋਂ, ਉਪਰੋਂ-ਇਧਰ ਤਕ ਫਟਾਫਟ ਘੁੰਮ ਘੁਮਾਈ ਕਰ ਕੇ ਭਾਨੀ ਮਾਰਾਂ ਦੀਆਂ ਗ਼ਲਤ ਫ਼ਹਿਮੀਆਂ ਦੂਰ ਕਰਨ ਤੋਂ ਇਲਾਵਾ ਦੋਹਾਂ ਰਿਸ਼ਤੇਦਾਰਾਂ ਵਿੱਚ ਸਤਿਕਾਰ ਤੇ ਪ੍ਰੇਮ-ਪਿਆਰ ਪੈਦਾ ਕਰਨਾ ਵੀ ਇਸ ਤਰ੍ਹਾਂ ਇੱਕ ਕੰਮ ਹੁੰਦਾ ਹੈ। ਜੇ ਪਿੰਡਾਂ ਵਿੱਚ ਕਿਸੇ ਚੰਗੇ ਸਲੀਕੇ ਵਾਲੇ ਵਰਤਾਉ ਨਾਲੇ ਆਰਥਕ ਰੋਹਬ ਬਿਠਾਉਣ ਕਾਰਨ ਵਧੇਰੇ ਪੈਦਾ ਹੁੰਦਾ ਹੈ। ਉਪਰੋਕਤ ਪੈਰੇ ਦੇ ਆਧਾਰ 'ਤੇ ਪੁੱਛੇ ਗਏ ਪ੍ਰਸ਼ਨਾਂ ਦੇ ਬਹੁ-ਵਿਕਲਪੀ ਉੱਤਰਾਂ ਵਿੱਚੋਂ ਠੀਕ ਉੱਤਰ ਸਾਹਮਣੇ ਨਿਸ਼ਾਨ ਲਗਾਓ-

1. ਘਰ ਕਿਉਂ ਘੱਟ ਰਹੇ ਹਨ ?

- (ੳ) ਨਵੀਂ ਸੋਚ ਕਾਰਨ
- (ਅ) ਲੋਕ ਵਿਖਾਵੇ ਕਾਰਨ
- (ੲ) ਮੋਹ ਪਿਆਰ ਘਟਣ ਕਰਕੇ
- (ਸ) ਵੇਖੋ-ਵੇਖੀ

2. ਵਿਆਹ ਸ਼ਾਦੀ ਵਿੱਚ ਹਿੰਸਾ ਪਾਉਣ ਵਾਲਾ ਅਦਭੁਤ ਪਾਤਰ ਕਿਹੜਾ ਹੁੰਦਾ ਹੈ ?

- (ੳ) ਭਾਨੀ-ਮਾਰ
- (ਅ) ਸੱਚਾ ਮਿੱਤਰ
- (ੲ) ਵਿਚੋਲਾ
- (ਸ) ਨਜ਼ਦੀਕੀ ਰਿਸ਼ਤੇਦਾਰ

3. ਵਿਚੋਲੇ ਨੂੰ ਕਿਸ ਦੀਆਂ ਤੱਤੀਆਂ ਠੰਡੀਆਂ ਸੁਣਨੀਆਂ ਪੈਂਦੀਆਂ ਹਨ ?

- (ੳ) ਮੁੰਡੇ ਵਾਲਿਆਂ ਦੀਆਂ
- (ਅ) ਪਿੰਡ ਵਾਲਿਆਂ ਦੀਆਂ
- (ੲ) ਮੁੰਡੇ-ਕੁੜੀ ਵਾਲਿਆਂ ਦੀਆਂ
- (ਸ) ਕੁੜੀ ਵਾਲਿਆਂ ਦੀਆਂ

4. ਵਿਚੋਲੇ ਨੂੰ ਕਿਸ ਵਾਂਗ ਏਧਰੋਂ-ਉਪਰ ਘੁੰਮਣਾ ਪੈਂਦਾ ਹੈ ?

- (ੳ) ਮੁਸਾਫ਼ਰਾਂ ਵਾਂਗ
- (ਅ) ਜੁਲਾਹੇ ਦੀ ਨੜੀ ਵਾਂਗ
- (ੲ) ਰਿਸ਼ਤੇਦਾਰਾਂ ਵਾਂਗ
- (ਸ) ਮਨਮਰਜੀ ਅਨੁਸਾਰ

5. ਵਿਚੋਲਾ ਦੋਨਾਂ ਧਿਰਾਂ ਵਿੱਚ ਕਿਸ ਤਰ੍ਹਾਂ ਦੀਆਂ ਗ਼ਲਤਫ਼ਹਿਮੀਆਂ ਦੂਰ ਕਰਦਾ ਹੈ?

- (ੳ) ਭਾਨੀ-ਮਾਰਾਂ ਦੀਆਂ
- (ਅ) ਰਿਸ਼ਤੇਦਾਰਾਂ ਦੀਆਂ
- (ੲ) ਪਿੰਡ ਵਾਲਿਆਂ ਦੀਆਂ
- (ਸ) ਮੁੰਡੇ ਕੁੜੀ ਵਾਲਿਆਂ ਦੀਆਂ

6. ਵਿਚੋਲਗੀ ਕਰਨਾ ਕਿਹੋ ਜਿਹਾ ਕਰਤੱਵ ਹੈ?

- (ੳ) ਭੈੜਾ
- (ਅ) ਚੰਗਾ
- (ੲ) ਉਸਾਰੂ
- (ਸ) ਕੋਈ ਵੀ ਨਹੀਂ

2 ਕਾਵਿ ਟੁਕੜੀ ਨੂੰ ਧਿਆਨ ਨਾਲ ਪੜ੍ਹੋ ਤੇ ਪੁੱਛੇ ਗਏ ਪ੍ਰਸ਼ਨਾਂ ਦੇ ਉੱਤਰ ਦਿਓ।:-

(4)

ਰੱਬਾ ਰੁੱਖਾਂ ਤੇ ਸਦਾ ਹੀ ਮਿਹਰ ਰੱਖੀ, ਇਹ ਖੜ ਦੇ ਵਿੱਚ ਹਨੇਰੀਆਂ ਨੇ।
ਠੰਡੀਆਂ ਛਾਵਾਂ ਤੇ ਸਭ ਨੂੰ ਫਲ ਵੰਡਣ, ਨਾ ਇਹ ਮੇਰੀਆਂ ਤੇ ਨਾ ਇਹ ਤੇਰੀਆਂ ਨੇ।
ਨਾਸੁਕਰੇ ਲੋਕਾਂ ਆਣ ਵੇਖੋ, ਆਰਾ ਚੁੱਕ ਰਾਹਾਂ ਘੇਰੀਆਂ ਨੇ।

- 1 ਕਵੀ ਪ੍ਰਮਾਤਮਾਂ ਨੂੰ ਰੁੱਖਾਂ ਉੱਤੇ ਕੀ ਰੱਖਣ ਲਈ ਕਹਿ ਰਿਹਾ ਹੈ?
- 2 ਰੁੱਖ ਸਭ ਨੂੰ ਕੀ ਵੰਡਦੇ ਹਨ?
- 3 ਨਾਸੁਕਰੇ ਕਿੰਨਾ ਨੂੰ ਕਿਹਾ ਗਿਆ ਹੈ?
- 4 ਆਰਾ ਚੁੱਕ ਕੇ ਰਾਹਾਂ ਕਿੰਨਾ ਨੇ ਘੇਰੀਆਂ ਹਨ?

3 ਵਿਆਕਰਨ (ਬਹੁ ਵਿਕਲਪੀ ਅਤੇ ਛੋਟੇ ਉੱਤਰਾਂ ਵਾਲੇ ਪ੍ਰਸ਼ਨ)

(12)

1 ਹੇਠ ਲਿਖਿਆਂ ਵਿੱਚੋਂ ਕਿਹੜਾ ਸਮਾਸੀ ਸ਼ਬਦ ਨਹੀਂ ਹੈ ? (ਕੋਇ ਦੋ)

- i. ਰਾਮ ਭਜਨੀ
- ii. ਲੋਕ- ਗੀਤ
- iii. ਲਾਲ- ਸੁਹਾ
- iv. ਉੱਚਾ-ਨੀਵਾਂ

2 ਸਮਾਸੀ ਸ਼ਬਦ ਬਣਾਉਣ ਵੇਲੇ ਕਿਹੜਾ ਚਿੰਨ੍ਹ ਲੱਗਦਾ ਹੈ?

- i. ਪ੍ਰਸ਼ਨ ਵਾਚਕ ਚਿੰਨ੍ਹ
- ii. ਡੈਸ਼
- iii. ਵਿਸ਼ਮਿਕ ਚਿੰਨ੍ਹ
- iv. ਜੋੜਨੀ

3 ਹੇਠ ਲਿਖਿਆਂ ਵਿੱਚੋਂ ਕਿਹੜਾ ਸਮਾਸੀ ਸ਼ਬਦ ਹੈ?

- i. ਰਸ ਨਾਲ ਭਰੀ
- ii. ਰਸ ਦੀ ਭਰੀ
- iii. ਰਸ-ਭਰੀ
- iv. ਰਸ -ਰਸ ਹੋਈ

2 ਦਿੱਤੇ ਗਏ ਬਹੁ ਵਿਕਲਪੀ ਪ੍ਰਸ਼ਨਾਂ ਵਿੱਚੋਂ ਕੋਇ ਦੋ ਸਹੀ ਬਹੁ ਅਰਥਕ ਸ਼ਬਦ ਚੁਣੋ

1 ਵਾਰ ਸ਼ਬਦ ਦਾ ਇੱਕ ਅਰਥ ਹੈ ਹਮਲਾ ਦੂਜਾ ਅਰਥ ਵੀ ਦੱਸੋ

- i. ਦਿਨ
- ii. ਸਵੇਰ
- iii. ਸਮਾਂ
- iv. ਜਾਣਾ

2 ਬੋਲੀ ਸ਼ਬਦ ਦਾ ਇੱਕ ਅਰਥ ਤਾਅਨਾ ਹੈ ਦੂਜਾ ਅਰਥ ਵੀ ਦੱਸੋ

- ਤੇੜਨਾ,
- ਪਿਆਰ
- ਭਾਸ਼ਾ,

3 ਬਹੁ-ਅਰਥਕ ਸ਼ਬਦ ਕਿਸ ਨੂੰ ਕਹਿੰਦੇ ਹਨ?

ਸਮਾਨ ਅਰਥ ਰੱਖਣ ਵਾਲੇ , ਨਾਂਵ ਦੀ ਥਾਂ ਤੇ ਪ੍ਰਯੋਗ ਹੋਣ ਵਾਲੇ , ਵਿਸ਼ੇਸ਼ਤਾ ਦੱਸਣ ਵਾਲੇ , ਇਕ ਤੋਂ ਵੱਧ ਅਰਥ ਰੱਖਣ ਵਾਲੇ

3 ਸਹੀ ਵਿਕਲਪ ਦੀ ਚੋਣ ਕਰੋ। (ਕੋਇ ਦੋ)

1 ਕਿਰਿਆ ਵਿਸ਼ੇਸ਼ਣ ਦੀਆਂ ਕਿੰਨੀਆਂ ਕਿਸਮਾਂ ਹਨ

ਅੱਠ, ਦਸ, ਪੰਦਰਾਂ, ਵੀਹ

2 ਸਹੀ ਸਥਾਨਵਾਚਕ ਕਿਰਿਆ ਵਿਸ਼ੇਸ਼ਣ ਚੁਣੋ

ਅੰਦਰ, ਬਾਹਰ, ਕਿੱਧਰ

ਅੱਜ, ਕੱਲ, ਪਰਸੋਂ

ਹੌਲੀ ਘੱਟ ਤੇਜ਼

ਇੱਕ, ਦੋ, ਪੰਜ

3 ਕਾਰਨ ਵਾਚਕ ਕਿਰਿਆ ਵਿਸ਼ੇਸ਼ਣ ਹੈ

ਇਸ ਲਈ, ਕਿਉਂਕਿ , ਸਵੇਰ ਕੁਵੇਲੇ , ਉਧਰੋਂ-ਇੱਧਰੇ , ਘੜੀ ਮੁੜੀ

4 ਹੇਠਾਂ ਲਿਖੇ ਕਿਸੇ ਇੱਕ ਅਗੇਤਰ ਨੂੰ ਵਰਤ ਕੇ ਦੇ-ਦੇ ਸ਼ਬਦ ਬਣਾਓ:-

ਅਪ , ਸਤਿ

ਹੇਠਾਂ ਲਿਖੇ ਕਿਸੇ ਇੱਕ ਪਿਛੇਤਰ ਨੂੰ ਵਰਤ ਕੇ ਦੇ-ਦੇ ਸ਼ਬਦ ਬਣਾਓ:-

ਸਾਰੇ , ਸਾਜ਼

5 ਹੇਠਾਂ ਲਿਖੇ ਮੁਹਾਵਰਿਆਂ ਵਿੱਚੋਂ ਕਿਸੇ ਚਾਰ ਨੂੰ ਇਸ ਤਰਾਂ ਵਾਕਾਂ ਵਿੱਚ ਵਰਤੋ ਕਿ ਉਹਨਾਂ ਦੇ ਅਰਥ ਸਪਸ਼ਟ ਹੋ ਜਾਣ:-

ਕੱਖ ਭੰਨ ਕੇ ਦੂਹਰਾ ਨਾ ਕਰਨਾ। , ਕਿਸਮਤ ਦਾ ਧਨੀ ਹੋਣਾ

ਖੂਨ ਸਫੇਦ ਹੋਣਾ , ਖੰਡ ਖੀਰ ਹੋਣਾ

ਗਲ ਪਿਆ ਢੋਲ ਵਜਾਉਣਾ , ਗੁਗਲੂਆਂ ਤੋਂ ਮਿੱਟੀ ਝਾੜਨਾ

3. ਪ੍ਰਭਾਵਸ਼ਾਲੀ ਲਿਖਣ ਕੋਸ਼ਲ

(8)

ਦਿੱਤੇ ਗਏ ਨੁਕਤਿਆਂ ਦੇ ਅਧਾਰ ਤੇ ਕਿਸੇ ਇੱਕ ਵਿਸ਼ੇ ਤੇ ਲੇਖ ਰਚਨਾ ਕਰੋ।

ਸੋਸ਼ਲ ਮੀਡੀਆ ਦਾ ਵੱਧ ਰਿਹਾ ਰੁਝਾਨ

ਨੁਕਤੇ- ਜਾਣ ਪਛਾਣ, ਸੋਸ਼ਲ ਮੀਡੀਆ ਦੇ ਲਾਭ, ਸੋਸ਼ਲ ਮੀਡੀਆ ਦੀ ਦੁਰਵਰਤੋਂ, ਸੋਸ਼ਲ ਮੀਡੀਆ ਦੀ ਦੁਰਵਰਤੋਂ ਰੋਕਣ ਲਈ ਕਾਨੂੰਨ

ਜਾਂ

ਕੁਦਰਤੀ ਕਰੋਪੀਆਂ

ਭੂਮਿਕਾ, ਕੁਦਰਤੀ ਕਰੋਪੀਆਂ ਦਾ ਕਾਰਨ, ਕੁਦਰਤੀ ਕਰੋਪੀਆਂ ਦਾ ਅਸਰ, ਕੁਦਰਤੀ ਕਰੋਪੀਆਂ ਤੋਂ ਬਚਾਓ, ਸਾਰੰਸ਼

4. ਆਪਣੇ ਸਕੂਲ ਦੇ ਪ੍ਰਿੰਸੀਪਲ ਸਾਹਿਬ ਨੂੰ ਇੱਕ ਬਿਨੈ -ਪੱਤਰ ਲਿਖੋ ਜਿਸ ਰਾਹੀਂ ਸਕੂਲ ਦੀ ਲਾਇਬ੍ਰੇਰੀ ਵਿੱਚ ਰੋਜ਼ਾਨਾ ਪੰਜਾਬੀ ਅਖਬਾਰ ਮੰਗਵਾਉਣ ਦੀ ਮੰਗ ਕਰੋ।

(6)

ਜਾਂ

ਰੋਸ਼ਨੀ ਅਤੇ ਸਾਫ਼ ਸਫ਼ਾਈ ਦੇ ਪ੍ਰਬੰਧ ਬਾਰੇ ਨਗਰ ਨਿਗਮ ਦੇ ਪ੍ਰਧਾਨ ਨੂੰ ਬਿਨੈ ਪੱਤਰ ਲਿਖੋ

5. ਦਿੱਤੇ ਗਏ ਚਿੱਤਰ ਦਾ ਵਰਨਣ 50 ਸ਼ਬਦਾਂ ਵਿੱਚ

(4)



6. ਪਾਠ ਪੁਸਤਕਾਂ ਤੇ ਆਧਾਰਿਤ (ਕੋਇ ਪੰਜ)

(40)

1. ਕਹਾਣੀ ਤੇ ਵਾਰਤਕ ਵਿੱਚੋਂ ਬਹੁ-ਵਿਕਲਪੀ ਪ੍ਰਸ਼ਨ ਹੱਲ ਕਰੋ।

ਪ੍ਰਿੰਸੀਪਲ ਤੇਜਾ ਸਿੰਘ ਦੀ ਸਵੈ ਜੀਵਨੀ ਦਾ ਕੀ ਨਾਂ ਹੈ

ਆਰਸੀ, ਨਵੀਂ ਦੁਨੀਆਂ, ਸਹਿਜ ਸੁਭਾਅ,

ਨਵੀਆਂ ਸੋਚਾਂ

2. ਕਾਰਲਾਈਲ ਦਾ ਆਪਣੀ ਪਤਨੀ ਪ੍ਰਤੀ ਵਤੀਰਾ ਕਿਹੋ ਜਿਹਾ ਸੀ

ਹਮਦਰਦੀ ਭਰਿਆ, ਪਿਆਰ ਭਰਿਆ ਸਾਂਝ ਵਾਲਾ,

ਬਦਸਲੂਕੀ ਵਾਲਾ

3. ਜਵਾਨੀ ਅਤੇ ਬੁਢਾਪੇ ਤੋਂ ਕਈ ਗੁਣਾਂ ਵੱਧ ਕੀਮਤੀ ਸਮਾਂ ਕਿਹੜਾ ਹੁੰਦਾ ਹੈ ?

ਸਕੂਲ ਜਾਣ ਦਾ , ਕਮਾਈ ਕਰਨ ਦਾ , ਬਚਪਨ ਦਾ,

ਪੜ੍ਹਾਈ ਦਾ

4. ਧਾੜਵੀ ਕੈਦੀ ਕਿਸ ਨੂੰ ਇੱਕੋ ਸਾਹੇ ਹਜ਼ਾਰ ਗਾਲਾਂ ਸੁਣਾਉਂਦਾ ?

ਮਹਾਰਾਜਾ ਰਣਜੀਤ ਸਿੰਘ ਨੂੰ , ਕੈਦੀਆਂ ਨੂੰ ਸੇਵਾਦਾਰਾਂ ਨੂੰ, ਨੌਕਰਾਂ ਨੂੰ।

5 ਨੀਂਦ ਲਈ ਮਹਾਰਾਜਾ ਰਣਜੀਤ ਸਿੰਘ ਨੇ ਕੀ ਕੀਤਾ ?

ਦਵਾਈ ਲਈ , ਸੌਣ ਦਾ ਯਤਨ ਕੀਤਾ , ਅਕਾਲ ਪੁਰਖ ਅੱਗੇ ਬੇਨਤੀ ਕੀਤੀ , ਪ੍ਰਭੂ ਦੀ ਭਗਤੀ ਸ਼ੁਰੂ ਕੀਤੀ

6 ਕਹਾਣੀਕਾਰ ਨੇ ਕਾਕੇ ਨੂੰ ਮੁਰਮੁਰਾ ਖਾਣ ਨਾਲ ਕਿਹੜੀ ਬਿਮਾਰੀ ਲੱਗਣ ਦਾ ਡਰ ਦਿੱਤਾ ?

ਬੁਖਾਰ, ਖੰਘ , ਜੁਕਾਮ , ਹੈਜਾ

7. **ਕਵਿਤਾ ਤੇ ਇਕਾਂਗੀ ਵਿੱਚੋਂ ਬਹੁ ਵਿਕਲਪੀ ਪ੍ਰਸ਼ਨ ਕੋਈ ਪੰਜ ਹੱਲ ਕਰੋ।**

(5)

1 ਸ੍ਰੀ ਗੁਰੂ ਨਾਨਕ ਦੇਵ ਜੀ ਦੀ ਬਾਣੀ ਕਿਸ ਗ੍ਰੰਥ ਵਿੱਚ ਸ਼ਾਮਲ ਹੈ?

ਦਸਮ ਗ੍ਰੰਥ ਸ੍ਰੀ ਗੁਰੂ ਗ੍ਰੰਥ ਸਾਹਿਬ ਜੀ ਦੇਵੇਂ ਸਗੀ ਕੋਈ ਵੀ ਨਹੀਂ

2 ਪਰਮਾਤਮਾ ਦੇ ਸੱਚੇ ਦਰਬਾਰ ਵਿੱਚ ਉਜਲੇ ਮੁੱਖ ਵਾਲੇ ਕੌਣ ਹੁੰਦੇ ਹਨ?

ਚੰਗੇ ਗੁਣਾਂ ਵਾਲੇ ਪਰਮਾਤਮਾ ਦੀ ਸਿਫਤ ਕਰਨ ਵਾਲੇ ਜਿਹਨਾਂ ਕੋਲ ਬਹੁਤ ਪੈਸਾ ਹੁੰਦਾ ਹੈ ਸਾਰੇ ਹੀ

3 ਸ੍ਰੀ ਗੁਰੂ ਅਮਰਦਾਸ ਜੀ ਕਿਸ ਘਰਾਣੇ ਨਾਲ ਸੰਬੰਧ ਰੱਖਦੇ ਸਨ।

ਸੇਢੀ ਮੱਲਾ ਭੱਲਾ ਕਟਾਰੀਆਂ

4 ਇਕਾਂਗੀ ਦਾ ਘਟਨਾਂ ਚੱਕਰ ਕਿਸਦੇ ਆਲੇ -ਦੁਆਲੇ ਘੁੰਮਦਾ ਹੈ?

ਜ਼ੀਨਤ ਔਰੰਗਜ਼ੇਬ ਬੇਗਮ ਉਦੈਪੁਰ ਅਸਲ ਖਾਨ

5 ਔਰੰਗਜ਼ੇਬ ਦੀ ਬੇਟੀ ਦਾ ਨਾਮ ਲਿਖੋ।

ਜ਼ੀਨਤ -ਉਨ੍ਹਾਂ- ਨਿਸਾ ਬੇਗਮ ਉਦੈਪੁਰੀ ਬੇਗਮ ਕੋਈ ਨਹੀਂ

6 ਬਾਬਰ ਨੇ ਕਿਸ ਅੱਗੇ ਸਿਰ ਝੁਕਾਇਆ ਸੀ

ਸ੍ਰੀ ਗੁਰੂ ਨਾਨਕ ਦੇਵ ਜੀ ਸ੍ਰੀ ਗੁਰੂ ਗੋਬਿੰਦ ਸਿੰਘ ਜੀ ਸ੍ਰੀ ਗੁਰੂ ਤੇਗ ਬਹਾਦਰ ਜੀ ਸ੍ਰੀ ਗੁਰੂ ਗੋਬਿੰਦ ਸਿੰਘ ਜੀ।

8 **ਦਿੱਤੇ ਗਏ ਪ੍ਰਸ਼ਨਾਂ ਦੇ ਉੱਤਰ ਇੱਕ ਦੇ ਸ਼ਬਦਾਂ ਵਿੱਚ ਲਿਖੋ-**

1x4=4

1 ਕਰਤਾਰ ਸਿੰਘ ਨੇ ਕਿਹੜੀ ਚੀਜ਼ ਵੇਚ ਕੇ ਪੈਸੇ ਵੱਟ ਲਏ ਸਨ?

2 ਅਮਰੀਕ ਸਿੰਘ ਨੂੰ ਆਪਣੇ ਘਰ ਦਿਆਂ ਨਾਲ ਕਿਸ ਗੱਲ ਦਾ ਇਤਰਾਜ਼ ਸੀ?

3 ਕਹਾਣੀ ਦੇ ਅੰਤ ਵਿੱਚ ਕਹਾਣੀਕਾਰ ਨੂੰ ਆਪਣਾ ਪੁੱਤਰ ਕਿਹੋ ਜਿਹਾ ਪ੍ਰਤੀਤ ਹੋਇਆ ?

4 ਕੌਣ ਹਰ ਵੇਲੇ ਆਪਣੀ ਪਤਨੀ ਨੂੰ ਖਿੱਚ ਕੇ ਖਾਣ ਨੂੰ ਪੈਂਦਾ ਸੀ ?

5 ਬੋਲੀ ਦਾ ਖ਼ਜ਼ਾਨਾ ਕਿਹੜੇ ਚੌਗਿਰਦੇ ਨਾਲ ਜੁੜਦਾ ਹੈ?

9. **ਦਿੱਤੇ ਗਏ ਪ੍ਰਸ਼ਨਾਂ ਦੇ ਉੱਤਰ 25-30 ਸ਼ਬਦਾਂ ਵਿੱਚ ਦਿਓ**

7x2=14

1 ਕੁਲਫੀ ਕਹਾਣੀ ਰਾਹੀਂ ਕਹਾਣੀਕਾਰ ਕੀ ਸੰਦੇਸ਼ ਦੇਣਾ ਚਾਹੁੰਦਾ ਹੈ ?

2 ਸ਼ਾਹਾਂ ਦੇ ਮੁੰਡੇ ਤੋਂ ਕੁਲਫੀ ਖੋਹਣ ਤੇ ਕਾਕੇ ਦੇ ਮਾਪਿਆਂ ਦੀ ਕੀ ਪ੍ਰਤੀਕਿਰਿਆ ਸੀ ?

3 ਬਚਪਨ ਵਿੱਚ ਅਮਰੀਕ ਕਿਹੋ ਜਿਹੇ ਬਾਪ ਦੀ ਕਲਪਨਾ ਕਰਦਾ ਹੈ ?

4 ਕਰਤਾਰ ਸਿੰਘ ਦੇ ਛੋਟੇ ਉਮਰੇ ਹੀ ਦੁਨੀਆਂ ਤੋਂ ਤੁਰ ਜਾਣ ਦੇ ਕੀ ਕਾਰਨ ਸਨ ?

5 ਕਰਤਾਰ ਸਿੰਘ ਆਪਣੀ ਭੈਣ ਦੀਆਂ ਕੁੜੀਆਂ ਦੇ ਵਿਆਹ ਦੀ ਚਿੱਠੀ ਆਉਣ ਤੇ ਕਿਉਂ ਖਿੜਿਆ ਰਹਿੰਦਾ ਸੀ ?

6 ਘਰ ਦਾ ਪਿਆਰ ਲੇਖ ਵਿੱਚ ਲੇਖਕ ਨੇ ਇੱਕ ਬਿਰਧ ਬੀਬੀ ਦਾ ਸੁਭਾ ਕਿਹੋ ਜਿਹਾ ਚਿੱਤਰਿਆ ਹੈ ?

7 ਸ਼ਾਹੀ ਮਹੱਲੇ ਵਿੱਚ ਨਾਚ ਦੀ ਆਵਾਜ਼ ਸੁਣ ਕੇ ਔਰੰਗਜ਼ੇਬ ਕੀ ਕਹਿੰਦਾ ?

8 ਔਰੰਗਜ਼ੇਬ ਨੂੰ ਨੀਂਦ ਕਿਉਂ ' ਨਹੀਂ ' ਆ ਰਹੀ ਸੀ ?

10. **ਵੱਡੇ ਉੱਤਰਾਂ ਵਾਲੇ ਪ੍ਰਸ਼ਨ ਹੱਲ ਕਰੋ**

2x4=8

1 ਕਿਰਪਾ ਕਰਿ ਕੈ ਬਖਸਿ ਲੈਹੁ ਦਾ ਕੇਂਦਰੀ ਭਾਵ ਲਿਖੋ।

2 ਪ੍ਰਸਿੱਧ ਲੇਖਕ ਐਸਕਰ ਵਾਈਲਡ ਦੇ ਅਰਦਾਸ ਬਾਰੇ ਕੀ ਵਿਚਾਰ ਹਨ?

3 ਮਨੁੱਖ ਦੇ ਆਚਰਨ ਨੂੰ ਬਣਾਉਣ ਵਿੱਚ ਘਰ ਦਾ ਕੀ ਯੋਗਦਾਨ ਹੈ?

11. ਜ਼ਫ਼ਰਨਾਮਾ ਇਕਾਂਗੀ ਦੇ ਸਿਰਲੇਖ ਬਾਰੇ ਚਰਚਾ ਕਰਦਿਆਂ ਲਿਖੋ ਕਿ ਇਸ ਦਾ ਸਿਰਲੇਖ ਢੁਕਵਾਂ ਹੈ ਜਾਂ ਨਹੀਂ?

(4)

ਜਾਂ

ਔਰੰਗਜ਼ੇਬ ਦਾ ਪਾਤਰ ਚਿੱਤਰਣ ਕਰੋ ।



BHAGWAN MAHAVEER PUBLIC SR SEC SCHOOL BANGA

Happowal Road Banga

TERM 1

Class 10 - Science

Time Allowed: 3 hours

Maximum Marks: 80

General Instructions:

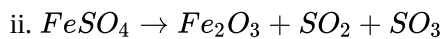
(Subject code– 086)

- This question paper consists of 39 questions in 5 sections.
- All questions are compulsory. However, an internal choice is provided in some questions. A student is expected to attempt only one of these questions.
- Section A consists of 20 objective type questions carrying 1 mark each.
- Section B consists of 6 Very Short questions carrying 02 marks each. Answers to these questions should be in the range of 30 to 50 words.
- Section C consists of 7 Short Answer type questions carrying 03 marks each. Answers to these questions should be in the range of 50 to 80 words.
- Section D consists of 3 Long Answer type questions carrying 05 marks each. Answer to these questions should be in the range of 80 to 120 words.
- Section E consists of 3 source-based/case-based units of assessment of 04 marks each with sub-parts.

Section A

- Chemically rust is: [1]
 - Metal oxide
 - Ferric oxide
 - Ferrous oxide
 - Hydrated ferric oxide
- We will observe white ppt in which of the following reaction? [1]
 - Barium chloride is mixed with hydrochloric acid
 - Barium chloride is mixed with sodium chloride solution
 - Barium chloride is mixed with sodium sulphate solution
 - Barium carbonate is mixed with sodium sulphate solution
- Which of the following substances is an antacid? [1]
 - NaCl
 - H₂SO₄
 - Mg(OH)₂
 - HCl
- Assertion (A):** Plaster of Paris is used by doctors by setting fractured bones. [1]
Reason (R): When Plaster of Paris is mixed with water and applied around the fractured limbs, it sets into a hard mass.

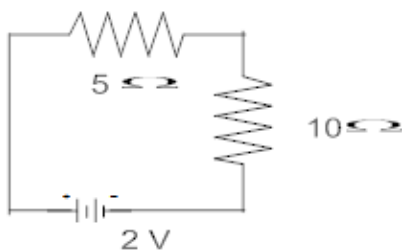
- a) Both A and R are true and R is the correct explanation of A. b) Both A and R are true but R is not the correct explanation of A.
- c) A is true but R is false. d) A is false but R is true.
5. Why is some KOH placed in a small test tube in the flask with germinating seeds in the experiment to demonstrate occurrence of respiration in germinating seeds? [1]
- a) To make the pair present in the flask alkaline. b) To absorb carbon dioxide and create partial vacuum in the flask.
- c) To absorb water from the seeds to make them dry. d) To provide oxygen required by the seeds for respiration.
6. Which part of alimentary canal receives bile from the liver? [1]
- a) Stomach b) Small intestine
- c) Large intestine d) Oesophagus
7. The inner lining of stomach is protected by one of the following from hydrochloric acid. Choose the correct one [1]
- a) Salivary amylase b) Pepsin
- c) Mucus d) Bile
8. Which of these is not a part of the small intestine? [1]
- a) Jejunum b) Rectum
- c) Duodenum d) Ileum
9. **Assertion (A):** Excretion is the biological process by which harmful wastes are removed from an organism's body. [1]
Reason (R): The mode of excretion is completely the same in both unicellular and multicellular organisms.
- a) Both A and R are true and R is the correct explanation of A. b) Both A and R are true but R is not the correct explanation of A.
- c) A is true but R is false. d) A is false but R is true.
10. Which part of the brain is responsible for memory, will, and power? [1]
- a) Mid brain b) Fore brain
- c) Hind brain d) None of these
11. Select the mis-matched pair [1]
- a) Estrogen - Ovary b) Testosterone - Testes
- c) Adrenaline - Pituitary gland d) Thyroxin - Thyroid gland
12. **Tongue receptor** is the receptor responsible for [1]
- a) speech b) Taste
- c) heating d) smell
13. Where should an object be placed in front of a convex lens to get a real image of the size of the object? [1]
- a) At 2F b) At Infinity
- c) At focus d) Between the optical centre and the focus



23. Which gas is usually liberated when an acid reacts with a metal? Illustrate with an example. How will you test for the presence of this gas? [2]
24. When and where does anaerobic respiration occur in man and yeast? [2]
25. A concave mirror produces three times magnified (enlarged) real image of an object placed at 10 cm in front of it. Where is the image located? [2]
26. Two resistors of resistance R and 2R are connected in parallel in an electric circuit. Calculate the ratio of the electric power consumed by R and 2R? [2]

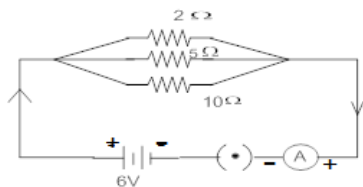
Section C

27. 2g of silver chloride is taken in a china dish and the china dish is placed in sunlight for some time. What will be your observation in this case? Write the chemical reaction involved in the form of a balanced chemical equation. Identify the type of chemical reaction. [3]
28. Write uses of [3]
- I. Acids
 - II. Bases
 - III. Salts
29. Leaves of healthy potted plant were coated with vaseline. Will this plant remain healthy for long? Give reasons for your answer. [3]
30. Nervous and hormonal system together performs the functions of control and coordination in human beings. Justify the statement. [3]
31. When one enters a less lighted room from a place of intense light, he is not able to see anything for sometime, but after sometime the things become somewhat visible. Explain how this happens? [3]
32. Calculate: [3]
- i. the effective resistance of the circuit and the current in the circuit
 - ii. Potential difference across $10\ \Omega$ resistor of a circuit shown in the figure.

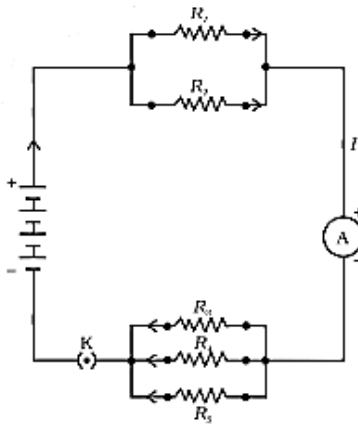


OR

In the circuit diagram given here, calculate-



- i. The total effective resistance and the total current
 - ii. The current through each resistor
33. If in figure, $R_1 = 10\ \Omega$, $R_2 = 40\ \Omega$, $R_3 = 30\ \Omega$, $R_4 = 20\ \Omega$, $R_5 = 60\ \Omega$, and a 12 V battery is connected to the arrangement. Calculate [3]



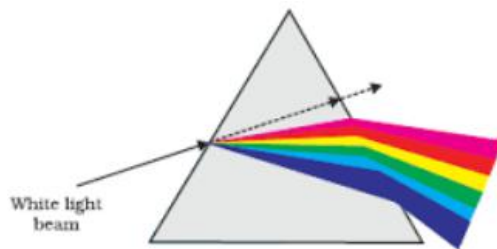
- a. the total resistance in the circuit, and
- b. the total current flowing in the circuit.

Section D

34. Read the following and answer the questions any four from (i) to (v):

[4]

Light gets refracted through a rectangular glass slab. The prism has probably split the incident white light into a band of colours. The colours appear at the two ends of the colour band. The various colours seen are Violet, Indigo, Blue, Green, Yellow, Orange and Red, as shown. Isaac Newton was the first to use a glass prism to obtain the spectrum of sunlight. A rainbow is a natural spectrum appearing in the sky after a rain shower.

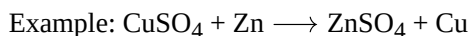


- i. For parallel refracting surfaces, as in a glass slab, the emergent ray is parallel to the
 - a. emergent ray, incident ray
 - b. refracted ray, incident ray
 - c. refracted ray, emergent ray
 - d. none of these
- ii. The angle between its two lateral faces is called the
 - a. angle of incident
 - b. angle of emergent
 - c. angle of refraction
 - d. angle of the prism.
- iii. When white light enters a prism, it gets split into its constituent colours. This is due to
 - a. the different refractive indexes for the different wavelengths of each colour.
 - b. each colour has the same velocity in the prism.
 - c. prism material has high density.
 - d. scattering of light.
- iv. Refraction of light by the earth's atmosphere due to variation in air density is called
 - a. atmospheric reflection
 - b. atmospheric dispersion
 - c. atmospheric scattering

- d. atmospheric refraction
- v. Which of the following statement is incorrect?
- A rainbow is always formed in a direction opposite to that of the Sun.
 - Due to the dispersion of light and internal reflection, different colours reach our eyes.
 - Isaac Newton was the first to use a glass prism to obtain the spectrum of sunlight.
 - Any light that gives a spectrum similar to that of sunlight is often referred to as blue light.

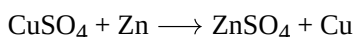
Question No. 35 to 38 are based on the given text. Read the text carefully and answer the questions: [4]

35. In a redox reaction, both oxidation, as well as reduction, takes place together, oxidation involves loss of electrons while reduction involves the gain of electrons. The redox- reaction may involve a combination of atoms and molecules, displacement of metals, or non-metals.



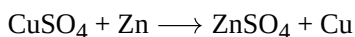
displacement of Cu metal from its compound.

35. 1) In the below equation, which gets reduced?

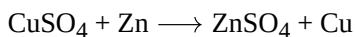


36. 2) The oxidising agent generally loses or gains an electron.

37. Identify the oxidising agent and reducing agent in the above reaction.

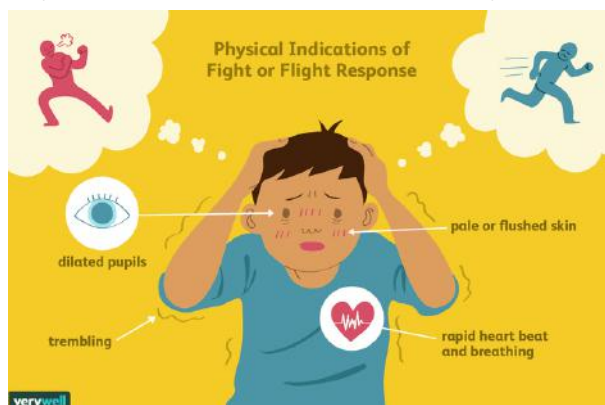


38. 4) Identify the type of given reaction.



Question No. 39 to 42 are based on the given text. Read the text carefully and answer the questions: [4]

36. Adrenaline is secreted directly into the blood and carried to different parts of the body. The target organs or the specific tissues on which it acts include the heart. As a result, the heart beats faster, resulting in the supply of more oxygen to our muscles. The blood to the digestive system and skin is reduced due to contraction of muscles around small arteries in these organs. This diverts the blood to our skeletal muscles. The breathing rate also increases because of the contractions of the diaphragm and the rib muscles. All these responses together enable the animal body to be ready to deal with the situation. Such animal hormones are part of the endocrine system which constitutes the second way of control and coordination in our body.



39. 1) How does chemical coordination take place in animals ?
40. 2) Which hormone is called an emergency hormone?
41. 3) Where are the adrenal gland present in our body?
42. 4) How does our body respond when adrenaline is secreted into the blood ?

Section E

43. 37 . Equal length of magnesium ribbon are taken in two test tubes A and B. H_2SO_4 is added to test tube A and H_2CO_3 in the test tube B in equal amounts: [5]
- Identify the test tube showing vigorous reaction.
 - Give reason to support your answer.
 - Name the gas liberated in both the tubes. How will you prove its liberation?
 - Write chemical equations for both reactions.
 - Out of the two acids taken above.
 - Which one will have lower pH value?
 - Which one will have lower H^+ concentration?

OR

A group of students measured the pH of some substances they found in their homes. Their results are given in the following table:

Substance	pH	Substance	pH
Apple	3.0	Salt	7.0
Baking soda	8.5	Suger	7.0
Black coffee	5.0	Toothpaste	9.0
Household ammonia	12.0	Vinegar	3.0
Lemon juice	2.5	Washing soda	11.5
Milk	6.5		

- Which solution is the most acidic?
 - Which solution is the most alkaline?
 - Which solutions are neutral?
 - Which solution can be used to treat wasp stings?
 - Which solution can be used to treat bee stings?
44. 38 . The labelled diagram of the excretory system in humans is shown below: [5]

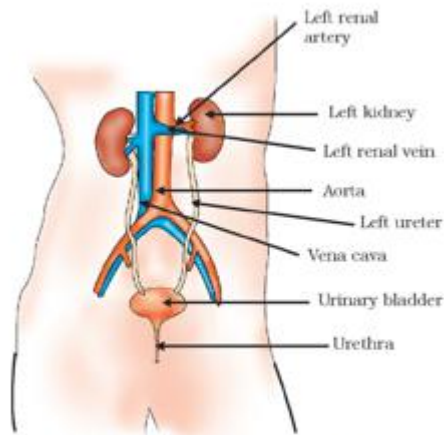


Diagram: Excretory System in Human Beings

Using the above diagram, answer the following questions:

- i. Where are kidneys located?
- ii. What is the function of the human excretory system?
- iii. Where is urine stored until it is released out of the body?
- iv. Which substances present in the blood pass into Bowman's capsule during filtration?
- v. What waste substances are present in the urine?

OR

Explain the process of digestion of food in mouth, stomach and small intestine in human body.

45. 39. 1 What is meant by power of a lens? Define its SI unit. 2) You have two lenses A and B of focal lengths +10 cm and - 10 cm, respectively. State the nature and power of each lens. Which of the two lenses will form a virtual and magnified image of an object placed 8 cm from the lens? Draw a ray diagram to justify your answer. [5]

OR

It is desired to obtain an erect image of an object, using concave mirror of focal length of 12 cm.

- i. What should be the range of distance of an object placed in front of the mirror?
- ii. Will the image be smaller or larger than the object? Draw ray diagram to show the formation of image in this case.
- iii. Where will the image of this object be, if it is placed 24 cm in front of the mirror? Draw ray diagram for this situation also to justify your answer. Show the positions of pole, principal focus and the centre of curvature in the above ray diagrams.



Part- A

(1x6=6)

1. Answer any 6 out of the given 7 questions based on Employability Skills:

1. Using abbreviations in communication leads to which type of communication barrier
 - a) Language/ Linguistic
 - b) Physical
 - c) Cultural
 - d) Organisational
2. Written communication can be classified in which type of communication?
 - a) Non-verbal
 - b) Verbal
 - c) Visual
 - d) None of these
3. Self-awareness require understanding how other people perceive us.
 - a. Internal
 - b. External
 - c. Both a & b
 - d. None of these
4. Which is not the example of intrinsic motivation?
 - a) Participating in a sport because you find the activity enjoyable.
 - b) Exercising because you want to relieve stress
 - c) Participating in a sport to win a reward.
 - d) Cleaning your room because you like to tidying up.
5. _____ are too focused on what others think and fail to focus on what matters to them.
 - a) Pleasers
 - b) Seekers
 - c) Introspectors
 - d) Aware
6. Which of these is an antivirus software?
 - a) Calc
 - b) Impress
 - b) Writer
 - d) McAfee
7. _____operating system enables multiple users to work on the same computer simultaneously.
 - a) Single- user, Single- task operating system
 - b) Multi-user
 - c) Single-user, multi-task operating system
 - d)None of the above

Part-B

(1x6=6)

2. Answer any 6 out of the given 7 questions.

1. Which of the following artificial intelligence domains gathers data, maintains datasets, and generalizes meaning from it?
 - a. Data Science
 - b. Neural Network
 - c. Computer Vision
 - d. Natural Language Processing
2. To develop into an intelligent machine, ____ is essential.
 - a. Analyzing
 - b. Training
 - c. Human Brain
 - d. None of the above
3. Identify which of the following is incorrect about the unsupervised learning-based model.
 - (i) We can provide a very large data set.
 - (ii) The algorithm itself analyzes the data set and determines relationship within that data.
 - (iii) The labelled data fed with some rules by the developers.
 - (iv) It lets make predictions and improves the algorithms on its own.
4. Natural Language Generation does not involve
 - (a) Text planning
 - (b) Text analysing
 - (c) Sentence planning
 - (d) Text realization

5. Aditya is working on a fraud detection system in which he is using certain technology to analyse patterns in financial transactions and identify potential instances of fraud. Which of the following technologies could Aditya be using?
- (a) Supercomputing (b) Neural networks
(c) Super networks (d) Computer Vision
6. What is the main goal of NLP?
- (a) To analyse and understand human language
(b) To translate text from one language to another
(c) To recognise patterns in text data
(d) To create a numerical representation of text data

Part – C

(1x8=8)

3. Answer any 8 out of the given 9 questions based on Subjective Skills:

- Sometimes, you use the internet and try to acquire data for your project from some random websites. Such data might not be authentic as its accuracy cannot be proved. Due to this, it becomes necessary to find a _____.
a. Reliable source b. Random source
c. Unauthorize source d. All of the above
- Which block of 4ws problem canvas focuses on the context/situation/location of the problem ?
a. Who b. What
c. Where d. Why
- Which of the following models the connections or data patterns that the developer defined?
a. Rule Base Approach b. Learning Based Approach
c. Knowledge Based Approach d. Decision Based Approach
- _____ refer to the type of data you want to collect.
a. Data features b. Exploring Data
c. Data Acquisition d. All of the above
- The data which is available as soon as an event takes place is known as ____ data.
a) Big data b) Real time data
c) Spatio temporal data d) Time stamped data
- What are the different reliable sources to collect the data in AI?
a. Surveys & Web Scraping b. Sensors & Cameras
c. Observations & API d. All of the above
- The ____ helps to summarize all the key points into one single template for Problem Scoping.
a. 4ws of problem scoping b. Problem Statement Template
c. Summary Template d. Problem Understanding Template
- Airlines' arrival/departure schedules and mark sheets of students in the specific class are examples of which of the following?
(a) Structured data (b) Unstructured data
(c) Semi-structured data (d) Big data
- _____ learning is a type of machine learning in which an agent learns by interacting with its environment and receiving rewards or penalties for certain actions
a) Reinforcement b) Supervised
c) Deep d) Unsupervised

Part – D

(1x4=4)

4. Answer any 4 out of the given 5 questions

1. Which of the following statements is not true
 - a. Data visualisation can help in identifying patterns, corrupt data outliers, etc.
 - b. Data science is the study of vast arrays of structured and unstructured data.
 - c. Using classification algorithms physicians are now able to diagnose cancer and tumours at an early stage.
 - d. Textual data is made up of characters only.
2. Identify the key data science skills among the following
 - a. data visualization
 - b. machine learning
 - c. Statistics
 - d. all of the above
3. Which of the following is not a part of problems scoping?
 - a. Goal identification
 - b. Model Selection
 - b. Stakeholders identification
 - d. Ethical Concerns Identification
4. For which of the following is Data Visualisation used
 - a. Data Modelling
 - b. Data Exploration
 - c. Data Formation
 - d. data identification
5. Which of the following is false?
 - a. Data visualization include the ability to absorb information quickly
 - b. Data visualization is another form of visual art
 - c. Data visualization decrease the insights and take slower decisions
 - d. None of the above

Part – E

Short Q/A (Do any 7)

(2x7=14)

1. What are various elements of a communication cycle?
2. What are the basic functions of an Operating System
3. What do you understand by AI bias? Explain with examples.
4. Write a short note on good AI policy.
5. What is Learning Based Approach?
6. What is the objective of evaluation stage?
7. What are the Applications of Data Science. Explain any one.
8. What is Data Privacy in AI?

Part - G

Long Q/A (Do any 3)

(3x4=12)

1. What do you understand by Ethics? What are the major AI ethical concerns related to AI adoption?
2. Differentiate between Data Acquisition and Data Exploring.
3. Differentiate between ML and DL.
4. Define the following:
 - a. Time- stamped data
 - b. Machine data
 - c. Spatiotemporal data
 - d. Open data



Bhagwan Mahaveer Public Sr. Sec. School Banga

Class- 10th

English Language and Literature

Section – A Reading Skills

General Instructions :

(i) The question Paper Contains Three sections – READING, GRAMMAR, WRITING and LITERATURE

(ii) Attempt questions based on specific instructions for each part.

Read the following passage:

(10)

1. Floods are not new to India and this subcontinent, but in recent years the problem of flooding has received much greater attention, perhaps largely because it has led to greater damage now than it did in the past. Even though information on the impending occurrence of floods is now more accurate and certainly more timely, often there is very little time or support infrastructure in place by which damage can be minimised. This is particularly true in the case of flash floods resulting from sudden and excessive heavy rain.

2. In the case of India, flooding is very much related to the seasonal nature of our rainfall. The monsoons are spread over a short period during the year and often bring a concentrated volume of rain, which cannot be absorbed by the earth and finds an outlet only in the form of streams that join up with our major river systems. Flooding due to heavy rain is confined not only to the main rivers of the country, but also affects smaller tributaries and streams. Once these streams spill over their banks they could cause excessive harm, mainly because those living near the banks of these streams, particularly in mountain areas, do not have easy recourse to moving away quickly.

3. One major factor that could lead to a higher severity of flooding in the future is the danger of climate change. While the evidence of the nature of impacts, resulting from climate change on precipitation and flooding at the regional level, is not entirely clear, it could happen that the Indian subcontinent witnesses and suffers the effects of a significantly changed pattern of monsoons. One set of scientists has estimated that the monsoons could be shorter in duration but far more intensive; in other words, much greater precipitation would take place in a much shorter period of time, thereby increasing the danger of floods. Climate change is the result of human actions through the increased concentration of greenhouse gases in the atmosphere, of which carbon dioxide is the most prominent. 10910

4. At the local level also human actions have heightened the danger of floods through the cutting of trees in the mountains as well as in the plains. In case of India, the ecological damage through deforestation of the Himalayas has led to large-scale erosion of the mountain slopes and high levels of siltation. These lead to the deposition of silt on the riverbeds in the plains and hence spillover of water whenever the volume in the river reaches a certain level. With siltation on the riverbeds, flooding occurs even at very shallow water levels. The vulnerability of the population has increased substantially because of population pressures. An example is the stubborn and perhaps helpless settling of slum dwellers on the banks of the river Yamuna in Delhi, who become victims of flooding. What is a mere trickle most of the year, bursts its banks during the monsoons, as has been the case in recent years.

5. Flood forecasting is critical to minimising the damage from floods. It is for this reason that the Central Water Commission has set up a network of forecasting stations, which cover the most important flood-prone interstate rivers in the country. These stations produce forecasts that are used to alert the public and to mobilise various official agencies so that they take both preventive as well as relief measures, whenever required. However, even in cases where forecasts have been timely and generally accurate, people have often been reluctant to move away, because in most cases they lack the means and physical options for moving away from a danger zone to one that is relatively safe. In the case of flash floods, forecasts are difficult to make, and often the time available for relief is very short.

Answer the following questions, based on the passage above.

(a) The problem of floods has been considered more important recently because:

(i) floods have led to much greater damage now than in the past

(ii) floods are resulting in increased relocation

(iii) floods occur only during the monsoon season

(iv) of problems of frequent tornadoes and cyclones in the subcontinent.

(b) The writer claims that flood forecasting is critical to minimizing the damage from floods.

State one reason for the claim.

(c) Supply one point to justify the following:

The worst hit people are slum dwellers.

(d) The passage includes some words that are opposites of each other. From the sets I-V below, identify two sets of antonyms:

- I. largely and substantially
- II. generally and particularly
- III. relief and safe
- IV. impact and effect
- V. smaller and greater

(e) Complete the sentence appropriately. According to the writer, heavy rain causes floods not only in the main rivers. _____

(f) Based on your reading of the text, infer why the writer says that in spite of timely forecasting people have suffered.

(g) The writer says that forecasts are difficult to make and time available is very short. Select the reason for it.

- (i) Flash floods
- (ii) Cyclonic rain
- (iii) Tornadoes
- (iv) Landslides

(h) Complete the sentence appropriately.

Because of population pressures,.....

Q-2 Read the following passage

(10)

1. According to a new study, a vast blanket of pollution stretching across South Asia is cutting down sunlight by 10 per cent over India, damaging agriculture, modifying rainfall patterns and putting hundreds of thousands of people at risk.

2. It is said, "Acids in the haze may, by falling as acid rain, have the potential to damage crops and trees. Ash falling on leaves can aggravate the impact of reduced sunlight on the Earth's surface. The pollution that is forming the haze could be leading to several hundreds of thousands of premature deaths as a result of higher levels of respiratory diseases."

3. "The haze has cut down sunlight over India by 10 per cent (so far)- a huge amount! As a repercussion, the North-West of India is drying up." Prof. V. Ramanathan said when asked specifically about the impact of the haze over India. He said, "We are still in an early stage of understanding of the impact of the haze."

4. Prof. V. Ramanathan was asked whether the current droughts in most parts of India after over a decade of good monsoons was owing to the haze. He said, "It was too early to reach a conclusion. If the droughts persist for about four to five years, then we would start suspecting that it may be because of the haze." India, China and Indonesia are the worst affected owing to their population density, economic growth and depleting forest cover.

Answer the following questions, based on the passage above.

(a) Complete the sentence appropriately.

There has not been enough time to determine that droughts were caused.....

(b) Fill the blanks with the appropriate option from those given in brackets, based on your understanding of the passage.

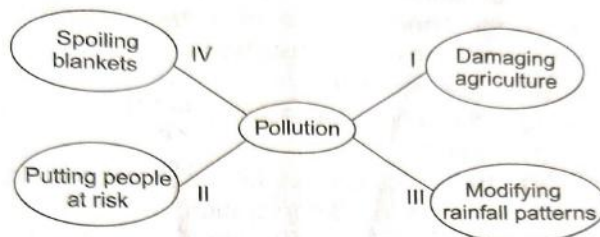
Ash falling on leaves can (lessen/ worsen) the impact of reduced _____ (sunlight/haze) on the Earth's surface.

(c) Infer one reason for the following based on the information in paragraph 1:

In India rainfall patterns are changing.

(d) The pollution spreading across South Asia is affecting India by _____

Choose the correct option from the ones given below:



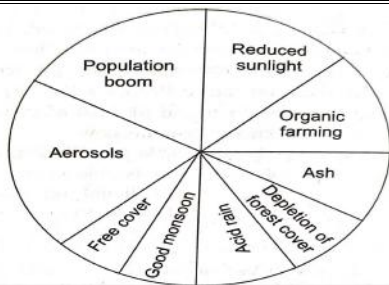
- (i) I, II and III
- (ii) I, III and IV
- (iii) II, III and IV
- (iv) I, II and IV

(e) List any two countries which are effected due to depleting forest cover .

(f) Which of the following means the same as 'persist' in 'droughts persist' as used in paragraph 4?

- (i) Destroying
- (ii) Halting
- (iii) Continue
- (iv) Blocking

(g) From the following pie chart, identify one reason each which does and does not contribute to weather disruption:



(h) give a suitable heading for each of the four paragraphs

Section B: Writing skills and Grammar

3. Complete (ANY TEN) of twelve of the following tasks, as directed. (10)

Fill-in the blanks by choosing the correct option from those given in brackets, to complete the sentence.

- i) Each candidate-----fill in these forms.
 (a) has to (b) were to (c) are to (d) have to
- ii) The condition of these tables -----(have/ is / were) still good.
- iii) Wood ----- (float/ will float/ floats) on water.
- iv) A pair of trousers----- (is/are/were)required
- v) When a person finds a river with fresh water he-----preserve it.
 i need not ii must iii would iv dare
- vi) The package----- (arrive) at nine in the morning, the day after tomorrow.
 i will arrive ii would arrive iii can arrive iv cannot arrive

Select the option that identifies the error and supplies the corrections

vii) Do you know that slouching should cause many problems?

Error Correction
 ----- -----

viii) The evil of begging is very common into our country.

Error Correction
 ----- -----

ix) You won't obey your parents.

Error Correction
 ----- -----

x). Report the given dialogue between Ankit and a police man, by completing the sentence.

Ankit: Please let me go.
 Policeman: Park the bike on the roadside.
 Ankit requested the police man to let him go.
 The police man ordered-----

xi) Select the correct option to complete the narration of a dialogue between Raj and his wife:

Raj: I have invited my friends for dinner.
 Wife: I'll invite my friends too.
 Raj told his wife that he had invited his friends for dinner. The wife added that -----

- A she will invite her friends too B she would invite her friends too
- C she can invite her friends too D she could invite her friends too

xii) Read the dialogue between Priya and Kashvi.

Priya: What is this strange thing?
 Kashvi: I am making a robot.

Select the correct option to complete the reporting of the above dialogue.

Priya asked Kashvi what that strange thing was.

Kashvi replied that.....

- A she had been making a robot B she is making a robot
- C she had made a robot D she was making a robot

4 Write any one letter from the following. 5m

(A) You are Preeti/Pramod residing at Green View Apartments ,Pune The rising prices of daily commodities have added to the problems of the common man who is finding it difficult to meet his daily needs. Write a letter to the Editor of a National daily voicing the problems you are

- (d) Griffin's presence was felt when:
 (i) he jumped into the water with a splash. (ii) he wore clothes.
 (iii) he left muddy footprints. (iv) he stepped in mud.
 (e) Which of the following is not true with reference to the given extract?
 (i) Griffin had become penniless. (ii) Griffin promised to behave himself.
 (iii) Griffin revealed himself by his muddy footprints.
 (iv) No one could see Griffin when he took off his clothes.

OR

Read the extract given below and answer the questions that follow:

He felt certain that his wings would never support him; so he bent his head and ran away back to the little hole under the ledge where he slept at night. Even when each of his brothers and his little sister, whose wings were far shorter than his own, ran to the brink, flapped their wings and flew away, he failed to muster up courage to take that plunge which appeared to him so desperate.

(a) The wings of his little sister were:

- (i) larger than his wings (ii) shorter than his wings
 (iii) same as his wings (iv) None of the above

(b) The young seagull felt assured (c) The seagull's brothers and sister:

- (i) were learning to fly (ii) were afraid to fly
 (iii) had already learnt to fly (iv) None of the above

(c) The Seagull's brothers and sister :

- (i) were learning to fly (ii) were afraid to fly
 (iii) had already learnt to fly (iv) None of the above

(d) What did the young seagull fail to do?

Q8 Answer any four of the following five questions, in about 40-50 words 4*3=12

- (i) "I will take the risk",?What is the risk ?Wnhy does the narrator take it? (Black Aeroplane)
 (ii) When would the Baker come every day?Why did the children run to meet him?
 (A Baker from Goa)
 (iii) Which season is the best to visit Coorge?
 (iv) How has Leslie Norris contrasted the life of a tiger in the zoo with that in his natural habitat?
 (v) What side of nature do 'crow ' and 'hemlock' represent?(Dust Of Snow)

Q 9 Answer ANY TWO of the following three questions ,in about 40-50 words. 2*3=6

- (i) What was the Horace Danby's hobby?How did he manage to fulfill it?(A Question of Trust)
 (ii) What happened to Max when he jumped from the window?(The Midnight Visitor)
 (iii) What conditions did Anil put to employ Hari as his servant?(The Thief's Story)

Q10 Answer ANY ONE of the following two questions,in about 100-120 words. 1*6=6'

(i)'I wish I had the faith of the man who wrote this letter'. Describe Lencho's character in the light of the statement.

(ii)Why was Anne's teacher annoyed with her? How was she able to bring about a change in his attitude towards her?

Q11 Answer ANY ONE of the following two questions, in about 100-120 words. 1*6=6

- (i) 'Griffin was rather a lawless person'. Comment.
 (ii) Why did Mrs Pumphrey thank Mr Harriot?



Bhagwan Mahaveer Public Sr. Sec. School Banga

Class- 10th

Term-I

Information Technology (402)

M.M. 50

SECTION – A

PART-1

Q1. Answer any 8 out of the given 9 questions:

(1X8=8)

1. At each stage of communication there is a potentiality of interference, which may hinder the process. Such interference is referred to as.
a) sender
b) receiver
c) barrier
d) none of them
2. Communication is an interaction between a sender and receiver involving a transfer of _____.
a) Pronunciation
b) information
c) verbal elements
d) power
3. Impact of stress depends on _____.
a) Age and health
b) Profession
c) Living conditions
d) All of these
4. The force that is within you drives you to do things.
a) Self-Awareness
b) Self-Regulation
c) Self-Motivation
d) None of the above
5. The process of _____ in your life helps you decide on how to live your life, where you want to be, and how you want to be in the future.
a) managing time
b) goal setting
c) dealing people
d) goals allows to
6. Taking risks can lead to failure but failure is _____ and entrepreneurs continue their course of action till they succeed.
a) Acceptable
b) Not Acceptable
c) Success
d) None of the above
7. What is the term for self-employment where someone runs a business to meet the needs of others and seeks ways to improve the business?
a) Entrepreneur
b) Business Idea
c) Entrepreneurship
d) Entrepreneurist
8. _____ consists of environment friendly methods of farming that allow the production of agricultural crops or livestock without damage to human or natural systems.
a) Sustainable Agriculture
b) Indefensible Agriculture
c) Both a) and b)
d) None of the above
9. Which of the following refers to an unwanted and unsolicited message.
a) Spam
b) MBR
c) Boot Sector Virus
d) None of these

PART-2

Q2. Answer any 8 out of the given 9 questions:

(1X8=8)

1. Computer _____ refers to the user friendliness of a computer system for all, regardless of their disability.
a) Shortcut Keys
b) Accessibility
c) Ctrl & Alt Key
d) None of the above
2. An organization can face some _____ that could put the lives of the employees in danger.
a) Issue
b) Health Hazards
c) Shortage
d) None of the above
3. The _____ accessibility function instructs the keyboard to ignore short or repeated inputs, making typing simpler for those people who have hand tremors.
a) Filter keys
b) Toggle Keys
c) Sticky Keys
d) None of the above
4. _____ is turned on, the computer emits sound when the locking keys such as Caps lock, Num lock and Scroll lock are pressed.
a) Filter keys
b) Toggle Keys
c) Sticky Keys
d) None of the above
5. _____ is an accessibility feature to assist people with vision impairment. You can change the text size and color, as well as the background color, to make it easier to read
a) High Contrast
b) Show Sound
c) Sound Sentry
d) None of the above
6. Networks in which all computers have an equal status are called _____.
a) Peer – to – Peer Network
b) Client – Server Network
c) Both a) and b)
d) None of the above
7. A _____ is a software program that is used to browse Web sites and serves as a bridge between the user and the World Wide Web
a) World Wide Web
b) Web Server
c) Web Browser
d) None of the above
8. _____ provide Internet access by transmitting digital data over wires of a local telephone network.
a) Dial – Up
b) Digital Subscriber Link (DSL)
c) 3G
d) WiMax
9. Which of the following is an application program that is stored on a remote server and delivered over the internet?
a) Web application
b) System application
c) Internet application
d) All of the above

PART-3

Q3. Answer any 8 out of the given 9 questions:

(1X8=8)

1. _____ affect the font and size of chosen text within a paragraph, as well as bold and italic forms.
a) Page styles
b) Paragraph styles
c) Character styles
d) Graphic styles



BHAGWAN MAHAVEER PUBLIC SR SEC SCHOOL BANGA

Happowal Road Banga

Term 1 session (2023 - 24)

CLASS 10 (Shivaji) MATHEMATICS

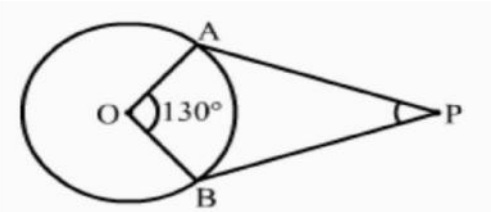
Time Allowed : 180 mins

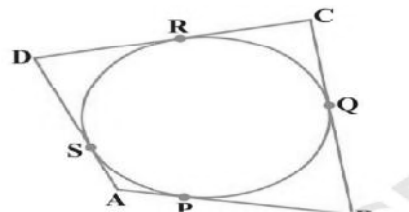
M.M : 80

General Instructions:

1. This Question Paper has 5 Sections A, B, C, D and E.
2. Section A has 20 MCQs carrying 1 mark each .
3. Section B has 5 questions carrying 02 marks each.
4. Section C has 6 questions carrying 03 marks each.
5. Section D has 4 questions carrying 05 marks each.
6. Section E has 3 case based integrated units of assessment (04 marks each) with sub-parts of the values of 1, 1 and 2 marks each respectively.
7. All Questions are compulsory. However, an internal choice in 2 Qs of 5 marks, 2 Qs of 3 marks and 2 Questions of 2 marks has been provided. An internal choice has been provided in the 2marks questions of Section E .
8. Draw neat figures wherever required. Take $\pi = 22/7$ wherever required if not stated

Section A		
1	The sum of the exponents of the prime factors in the prime factorisation of 196, is a) 2 b) 1 c) 4 d) 6	[1]
2	$\sqrt{2}$ is a) a non - terminating repeating decimal b) a rational number c) a terminating decimal d) an irrational number	[1]
3	The zeros of the polynomial $x^2 - \sqrt{2}x - 12$ are a) 3, 1 b) $\sqrt{2}, -\sqrt{2}$ c) $3\sqrt{2}, -2\sqrt{2}$ d) 3, - 1	[1]
4	If α, β are the zeros of the polynomial $f(x) = x^2 + x + 1$, then $\frac{1}{\alpha} + \frac{1}{\beta} =$ a) - 1 b) 1 c) 0 d) None of these	[1]
5	The graphic representation of the equations $x + 2y = 3$ and $2x + 4y + 7 = 0$ gives a pair of a) parallel lines b) intersecting lines c) coincident lines d) none of these	[1]
6	In ΔABC , if $\angle C = 3 \angle B = 2(\angle A + \angle B)$, then $\angle C =$ a) 90° b) 150° c) 120° d) 60°	[1]
7	Which of the given is a quadratic equation? a) $x + \frac{1}{x} = x^2$ b) $x + \frac{1}{x^2} = 5$ c) $x^2 - 3\sqrt{x} + 2 = 0$ d) $2x^2 - 5x = (x - 1)^2$	[1]

8	A quadratic equation $ax^2 + bx + c = 0$ has real and distinct roots, if a) $b^2 - 4ac \geq 0$ b) $b^2 - 4ac < 0$ c) $b^2 - 4ac = 0$ d) none of these	[1]														
9	Which of the given is not an A.P.? a) $3, 3 + \sqrt{2}, 3 + 2\sqrt{2}, 3 + 3\sqrt{2}, \dots$ b) $\frac{-1}{5}, \frac{-2}{5}, \frac{-3}{5}, \dots$ c) $-1.2, 0.8, 2.8, \dots$ d) $\frac{4}{3}, \frac{7}{3}, \frac{9}{3}, \frac{12}{3}, \dots$	[1]														
10	The 10th term of an A.P. 2, 7, 12, ... is a) 47 b) 48 c) 49 d) 50	[1]														
11	The distance between the points (3, - 2) and (- 3, 2) is: a) 40 b) $4\sqrt{10}$ c) $2\sqrt{10}$ d) $\sqrt{52}$	[1]														
12	The coordinates of the mid - point of the line segment joining the points (x_1, y_1) and (x_2, y_2) is given by a) $\left(\frac{x_1+x_2}{2}, \frac{y_1+y_2}{2}\right)$ b) $\left(\frac{x_1-x_2}{2}, \frac{y_1-y_2}{2}\right)$ c) $\left(\frac{x_1-y_1}{2}, \frac{x_2-y_2}{2}\right)$ d) $\left(\frac{x_1+y_1}{2}, \frac{x_2+y_2}{2}\right)$	[1]														
13	Consider the following frequency distribution: <table border="1" style="margin-left: auto; margin-right: auto;"> <thead> <tr> <th>Class</th> <th>0-10</th> <th>10-20</th> <th>20-30</th> <th>30-40</th> <th>40-50</th> <th>50-60</th> </tr> </thead> <tbody> <tr> <td>Frequency</td> <td>3</td> <td>9</td> <td>15</td> <td>30</td> <td>18</td> <td>5</td> </tr> </tbody> </table> <p>The modal class is</p> a) 50 - 60 b) 20 - 30 c) 10 - 20 d) 30 - 40	Class	0-10	10-20	20-30	30-40	40-50	50-60	Frequency	3	9	15	30	18	5	[1]
Class	0-10	10-20	20-30	30-40	40-50	50-60										
Frequency	3	9	15	30	18	5										
14	If the median of the data: 6, 7, x - 2, x, 17, 20, written in ascending order, is 16. Then x = a) 18 b) 16 c) 15 d) 17	[1]														
15	If two different dice are rolled together, the probability of getting an even number on both dice. a) $\frac{1}{2}$ b) $\frac{1}{4}$ c) $\frac{1}{36}$ d) $\frac{1}{6}$	[1]														
16	A bag contains cards numbered from 1 to 25. A card is drawn at random from the bag. The probability that the number on this card is divisible by both 2 and 3 is a) $\frac{2}{25}$ b) $\frac{1}{5}$ c) $\frac{3}{25}$ d) $\frac{4}{25}$	[1]														
17	If angle between two radii of a circle is 130° , the angle between tangents at ends of radii is : 	[1]														

18	A tangent PQ at a point P of a circle of radius 5 cm meets a line through the centre O at a point Q so that OQ = 12 cm. Length PQ is: a) 8.5 cm b) 13 cm c) 12 cm d) $\sqrt{119}$	[1]												
19	Assertion: The sum and product of the zeros of a quadratic polynomial are $-\frac{1}{4}$ and $\frac{1}{4}$ respectively. Then the quadratic polynomial is $4x^2 + x + 1$. Reason: The quadratic polynomial whose sum and product of zeros are given is $x^2 - (\text{sum of zeros}).x + \text{product of zeros}$. a) Assertion and reason both are correct statements and reason is correct explanation for assertion. b) Assertion and reason both are correct statements but reason is not correct explanation for assertion. c) Assertion is correct statement but reason is wrong statement. d) Assertion is wrong statement but reason is correct statement.	[1]												
20	Assertion (A): The probability of an impossible event is 0. Reason (R): There is no favorable event in case of an impossible event. a) Both A and R are true and R is the correct explanation of A. b) Both A and R are true but R is not the correct explanation of A. c) A is true but R is false. d) A is false but R is true.	[1]												
Section B														
21	If the prime factorization of 2520 is expressible as $2^3 \times 3^p \times q \times 7$, then find the values of p and q . OR Find the largest number which divides 438 and 606 leaving remainder 6 in each case.	[2]												
22	Find whether the lines representing the following pair of linear equations intersect at a point, are parallel or coincident : $\frac{3}{2}x + \frac{5}{3}y = 7$; $\frac{3}{2}x + \frac{2}{3}y = 6$	[2]												
23	If the mean of the following frequency distribution is 24, find the missing frequency k. <table border="1" style="margin-left: auto; margin-right: auto;"> <thead> <tr> <th>Marks</th> <th>0-10</th> <th>10-20</th> <th>20-30</th> <th>30-40</th> <th>40-50</th> </tr> </thead> <tbody> <tr> <td>Number of Students</td> <td>15</td> <td>20</td> <td>35</td> <td>k</td> <td>10</td> </tr> </tbody> </table>	Marks	0-10	10-20	20-30	30-40	40-50	Number of Students	15	20	35	k	10	[2]
Marks	0-10	10-20	20-30	30-40	40-50									
Number of Students	15	20	35	k	10									
24	One card is drawn from a well shuffled deck of 52 playing cards. What is the probability of getting a non - face card?	[2]												
25	A circle touches all the four sides of a quadrilateral ABCD. Prove that AB + CD = BC + DA. 	[2]												

	OR		
	Show that tangent lines at the end points of a diameter of a circle are parallel.		
	SECTION C		
26	Prove that $\sqrt{2} + \sqrt{5}$ is irrational. OR Show that $\frac{\sqrt{2}}{3}$ is irrational.		[3]
27	Find the zeroes of the given quadratic polynomials and verify the relationship between the zeroes and the coefficients. $7y^2 - \frac{11}{3}y - \frac{2}{3}$		[3]
28	A two - digit number is such that the product of its digits is 15. If 18 is added to the number, the digits interchange their places. Find the number.		[3]
29	If the last term of an A.P. of 30 terms is 119 and the 8 th term from the end (towards the first term) is 91, then find the common difference of the A.P. Hence, find the sum of all the terms of the A.P.		[3]
30	The length of a line segment is 10. If one end point is (2, - 3) and the abscissa of the second end point is 10, show that its ordinate is either 3 or -9. OR Find the fourth vertex of parallelogram ABCD whose three vertices are A(-2, 3), B(6, 7) and C(8, 3).		[3]
31	Find the probability that a leap year selected at random will contain 53 Sundays. OR A piggy bank contains hundred 50 - p coins, seventy Rs.1 coin, fifty Rs.2 coins and thirty Rs.5 coins. If it is equally likely that one of the coins will fall out when the bank is turned upside down, what is the probability that the coin 1. will be a Rs. 1 coin? 2. will not be a Rs.5 coin 3. will be 50 - p or a Rs. 2 coin?		[3]
	Section - D		
32	The sum of numerator and denominator of a fraction is four more than twice the numerator. If the numerator and denominator are increased by 3, they are in ratio 2 : 3. determine he fraction . OR A lending library has a fixed charge for the first three days and an additional charge for each day thereafter. Saritha paid ₹ 27 for a book kept for seven days, while Susy paid ₹ 21 for the book she kept for five days. Find the fixed charge and the charge for each extra day.Solve the pair of the linear equation obtained by the elimination method.		[5]
33	If the centre of circle is (2a, a – 7) then find the values of a if the circle passes through the point (11, –9) and has diameter $10\sqrt{2}$ units.		[5]

34 Find the median from the following data:

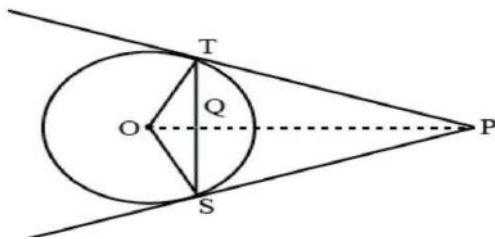
Marks	Number of students
Below 10	12
Below 20	32
Below 30	57
Below 40	80
Below 50	92
Below 60	116
Below 70	164
Below 80	200

[5]

35 ΔABC is drawn to circumscribe a circle of radius 4 cm such that the segments BD and DC into which BC is divided by the point of contact D are of lengths 8 cm and 6 cm respectively. Find the lengths of sides AB and AC.

OR

From an external point P, two tangents PT and PS are drawn to a circle with center O and radius r. If $OP = 2r$, show that $\angle OTS = \angle OST = 30^\circ$

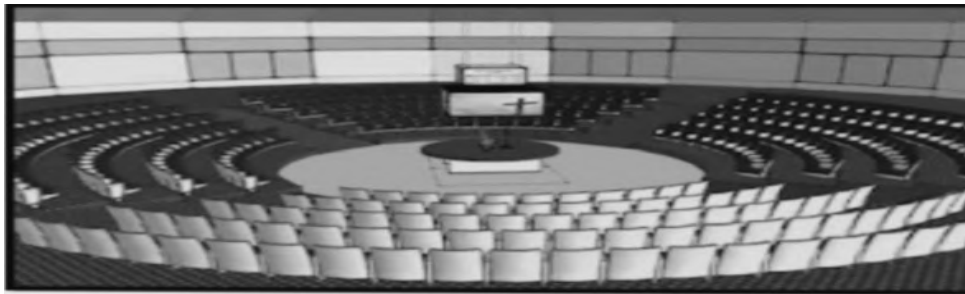


SECTION E

[5]

36 **Case study**

The school auditorium was to be constructed to accommodate at least 1500 people. The chairs are to be placed in concentric circular arrangement in such a way that each succeeding circular row has ten seats more than the previous one based on the above information under the column question .



[1]

a. If the first circular row has 30 seats, how many seats will be there in 10 row?

b. For 1500 seats in the auditorium ,how many rows need to be there ?

[2]

OR

If 1500 students are to be arranged in the auditorium, How many seats are still left to be put after 10th row.?

c. If there were 17 rows in the auditorium, how many seats will be there in middle row .?

[1]

37. Nitasha and Kanishka are very close friends. Nitasha owns a Honda city and Kanishka owns Tyota Corolla. They go for a picnic by their cars. Kanishka's car travels at x km/hr while Nitasha 's car travels at 5 km/hr more than Kanishka's car. Nitash's car takes 1 hour less than Kanishka's car in covering 360 km.

- a) What will be the distance covered by Nitasha's car in 5 hrs.? (1)
- b) Write the quadratic equation that describes the condition. (1)
- c) What is the speed of the Nitasha's car? (2)

Or

How much time did Nitasha take to cover 360 km.

38. During examination in a school, seats are arranged in rows. If 3 students are extra in a row, there would be 1 row less. If 3 students are less in a row there would be 2 rows more.

Answer the following questions.

- 1) If x be the number of students in each row and y be the number of rows, then write the system of linear equation for total number of students. (1)
- 2) Find the total number of rows in the class. (1)
- 3) Find the number of students in each row. (2)

Or

Find the total number of students in the class.



BHAGWAN MAHAVEER PUBLIC SR SEC SCHOOL BANGA
CLASS 10 SOCIAL SCIENCES (CODE 087)
TERM - 1 SESSION 2023 - 2024

Time Allowed : 180 mins

Maximum Marks : 80

General Instructions:

1. The question paper comprises five Sections – A, B, C, D, E. There are 38 questions in the Question paper. All questions are compulsory..

Section A – From questions 1 to 20 are MCQs of 1 mark each..

Section B – Question no. 21 to 24 are Very Short Answer Type Questions, carrying 2 marks each. Answer to each question should not exceed 40 words. Q25 ,26 are Map Based (2+3).


Section C contains Q.27to Q.31 are Short Answer Type Questions, carrying 3 marks each. Answer to each question should not exceed 60 words.

Section - D - Questions no from 32 to 34 are case based questions with three sub questions and are of 4 marks each. 6.

Section E – Question no. 35 to 38 are long answer type questions, carrying 5 marks each. Answer to each question should not exceed 120 words. with internal choice. There is no overall choice in the question paper. However, an internal choice has been provided in few questions. Only one of the choices in such questions have to be attempted.. In addition to this, separate instructions are given with each section and question, wherever necessary.

Section A										
1	When did the joint forest management come into existence: a) 1958 b) 1978 c) 1988 d) 1968	[1]								
2	Assertion (A): States such as Assam, Nagaland, Arunachal Pradesh, and Mizoram enjoy special powers. Reason (R): It depends mainly on the historical context in which the federation was formed. a) Both A and R are true and R is the correct explanation of A. b) Both A and R are true but R is not the correct explanation of A. c) A is true but R is false. d) A is false but R is true.	[1]								
3	Assertion (A): Equal Remuneration Act, 1976, provides that equal wages should be paid for equal work, irrespective of gender and caste. Reason (R): Women are physically weak so they are righteously paid less than men. a) Both A and R are true and R is the correct explanation of A. b) Both A and R are true but R is not the correct explanation of A. c) A is true but R is false. d) A is false but R is true.	[1]								
4	Assertion (A): Women and non - propertied men organized movements throughout the nineteenth and early twentieth centuries. Reason (R): They were demanding equality before the law. a) Both A and R are true and R is the correct explanation of A. b) Both A and R are true but R is not the correct explanation of A. c) A is true but R is false. d) A is false but R is true.	[1]								
5	Fill in the blanks: 1. _____ was recognised as the official language of Srilankain the year 1956.	[1]								
6	<table border="1" style="width: 100%; border-collapse: collapse;"> <tbody> <tr> <td style="padding: 2px;">(a) Raju is engaged in making of an envelope.</td> <td style="padding: 2px;">(i) Primary Sector</td> </tr> <tr> <td style="padding: 2px;">(b) Prabha is a flower cultivator.</td> <td style="padding: 2px;">(ii) Service Sector</td> </tr> <tr> <td style="padding: 2px;">(c) Gaurav is a tutor in coaching center.</td> <td style="padding: 2px;">(iii) Organised sector</td> </tr> <tr> <td style="padding: 2px;">(d) Deep is working in an organization enjoyingleave benefit.</td> <td style="padding: 2px;">(iv) Secondary Sector</td> </tr> </tbody> </table> <p>Match the following: a) (a) - (iv), (b) - (ii), (c) - (iii), (d) - (i) b) (a) - (ii), (b) - (i), (c) - (iv), (d) - (iii)</p>	(a) Raju is engaged in making of an envelope.	(i) Primary Sector	(b) Prabha is a flower cultivator.	(ii) Service Sector	(c) Gaurav is a tutor in coaching center.	(iii) Organised sector	(d) Deep is working in an organization enjoyingleave benefit.	(iv) Secondary Sector	
(a) Raju is engaged in making of an envelope.	(i) Primary Sector									
(b) Prabha is a flower cultivator.	(ii) Service Sector									
(c) Gaurav is a tutor in coaching center.	(iii) Organised sector									
(d) Deep is working in an organization enjoyingleave benefit.	(iv) Secondary Sector									

	c) (a) - (iv), (b) - (i), (c) - (iii), (d) - (ii) d) (a) - (iv), (b) - (i), (c) - (ii), (d) - (iii)									
7	<table border="1"> <tr> <td>(a) Bank</td> <td>(i) The business of banks totally depends</td> </tr> <tr> <td>(b) Founder of Grameen Bank</td> <td>(ii) Crop production</td> </tr> <tr> <td>(c) Deposits</td> <td>(iii) An institution that gives loan and advances to the borrowers and charges interest</td> </tr> <tr> <td>(d) Farmers take a loan for</td> <td>(iv) Prof. Muhammad Yunus</td> </tr> </table> <p>Match the following: a) (a) - (iii), (b) - (i), (c) - (iv), (d) - (ii) b) (a) - (iii), (b) - (iv), (c) - (i), (d) - (ii) c) (a) - (ii), (b) - (iv), (c) - (i), (d) - (iii) d) (a) - (iii), (b) - (ii), (c) - (i), (d) - (iv)</p>	(a) Bank	(i) The business of banks totally depends	(b) Founder of Grameen Bank	(ii) Crop production	(c) Deposits	(iii) An institution that gives loan and advances to the borrowers and charges interest	(d) Farmers take a loan for	(iv) Prof. Muhammad Yunus	[1]
(a) Bank	(i) The business of banks totally depends									
(b) Founder of Grameen Bank	(ii) Crop production									
(c) Deposits	(iii) An institution that gives loan and advances to the borrowers and charges interest									
(d) Farmers take a loan for	(iv) Prof. Muhammad Yunus									
8	<table border="1"> <tr> <td>(a) Trade and cultural exchange always went hand in hand.</td> <td>(i) Abolition of Corn Laws</td> </tr> <tr> <td>(b) Most of the workers migrated in hope for a bright future, but they were exploited by the recruiting agent and by the employer.</td> <td>(ii) Silk route</td> </tr> <tr> <td>(c) Food could be imported or exported into Britain freely.</td> <td>(iii) Indentured labour</td> </tr> <tr> <td>(d) Decline in production, employment, income and trade.</td> <td>(iv) Great Depression</td> </tr> </table> <p>Match the following: a) (a) - (iv), (b) - (ii), (c) - (iii), (d) - (i) b) (a) - (ii), (b) - (iii), (c) - (i), (d) - (iv) c) (a) - (iii), (b) - (iv), (c) - (i), (d) - (ii) d) (a) - (iii), (b) - (i), (c) - (iv), (d) - (ii)</p>	(a) Trade and cultural exchange always went hand in hand.	(i) Abolition of Corn Laws	(b) Most of the workers migrated in hope for a bright future, but they were exploited by the recruiting agent and by the employer.	(ii) Silk route	(c) Food could be imported or exported into Britain freely.	(iii) Indentured labour	(d) Decline in production, employment, income and trade.	(iv) Great Depression	[1]
(a) Trade and cultural exchange always went hand in hand.	(i) Abolition of Corn Laws									
(b) Most of the workers migrated in hope for a bright future, but they were exploited by the recruiting agent and by the employer.	(ii) Silk route									
(c) Food could be imported or exported into Britain freely.	(iii) Indentured labour									
(d) Decline in production, employment, income and trade.	(iv) Great Depression									
9	At least _____ of seats of all positions are reserved for women. a) half b) one - third c) one - fourth d) two - third	[1]								
10	A _____ holder can withdraw money from bank at a fixed time. a) fixed deposit account b) recurring deposit c) current deposit d) savings deposit account	[1]								
11	The Great Depression began around _____ and lasted till the mid _____. a) 1929, 1931 b) 1927, 1929 c) 1929, 1930 d) 1928, 1929	[1]								
12	Arrange the following in correct sequence: 1. Rowlatt act passed by council 3. Mahatma Gandhi returned to India 2. Jallianwala bagh incident 4. Simon Commission a) i, iii, iv, ii, b) ii, iv, iii, I, c) iii, iv, ii, i, d) ii, i, iii, iv,	[1]								
13	Evaluate the factors that promoted the shift in the importance of sectors by identifying the appropriate statements among the following options: 1. New methods of manufacturing were introduced. 2. People who had earlier worked on farms began to work in factories. 3. Change in methods of farming and agriculture. 4. Preferring factory - made goods at a cheap rate. a) Only statement iv is appropriate. b) Statements i, ii and iii are appropriate. c) All the statements are appropriate. d) Statements i and ii are appropriate.	[1]								
14	Which of the following provisions of the Indian Wildlife Protection Act are applicable for maintaining ecological diversity and protecting habitats? 1. Integrating diverse flora and fauna into our daily life. 2. Banning hunting and giving legal protection to the animals in their habitats. 3. Recommending establishing national parks and wildlife sanctuaries. 4. Providing legal protection to many marine animals. a) Statement ii is correct. b) Statement i and ii are correct.	[1]								

	c) Statement i, ii, & iii are correct. d) Statement ii, iii & iv are correct.	
15	Which of the following statements accurately distinguishes Sri Lankan Tamils and Indian Tamils? a) Sri Lankan Tamils are native to Sri Lanka, while Indian Tamils are descendants of plantation workers from India b) Sri Lankan Tamils are concentrated in the north and east of Sri Lanka, while Indian Tamils are dispersed across the country. c) Sri Lankan Tamils are predominantly Buddhist, while Indian Tamils are predominantly Hindu or Muslim. d) Sri Lankan Tamils constitute 74% percent of the Tamil - speaking population, while Indian Tamils constitute 18%	[1]
16	Identify the disease from the given information: 1. It is a disease which affects cattle. 2. It came with the horses which were imported from British Asia. a) Salmonella b) Bubonic Plague c) Rinderpest d) Influenza	[1]
17	The annual Per Capita Incomes of two countries are given below. Based on the guidelines set by the World Bank Report (2017). Country A: US Dollar 13,056 per annum Country B: US Dollar 900 per annum As per the data, what is the status of Country A? a) Low income Country b) High income Country c) Exclusive income Country d) Low Middle income Country	[1]
18	Read the information given below and select the correct option Swapna, a small farmer, grows groundnut on her three acres of land. She takes a loan from the moneylender to meet the expenses of cultivation, hoping that her harvest would help repay the loan. Midway through the season, the crop is hit by pests and the crop fails. She is unable to repay the moneylender and the debt grows over the year into a large amount. Next year, Swapna takes a fresh loan for cultivation. It is a normal crop this year. But the earnings are not enough to cover the old loan. She is caught in debt. She has to sell a part of the land to pay off the debt. Which situation is Swapna facing? a) Situation of barter system b) Situation of lack of double coincidence of wants c) Situation of no collateral security d) Situation of debt trap	[1]
19	Study the map thoroughly and mention the languages that are dominantly spoken in Belgium 	[1]
20	State True or False: Untouchability has been abolished in India by Article 17 of the Indian Constitution. 1. Uttar Pradesh has the largest area under permanent forest.	[1]
Section B		
21	Why did Gandhiji decide to withdraw Non - Cooperation Movement? Explain.	[2]
22	Explain how the global transfer of disease in the pre - modern world helped in the colonization of the Americas.	[2]
23	What is meant by the term "resource"? List the types of resources classified on the basis of its ownership.	[2]
24	Write any Four Different types of soils found In India.	[2]
25	1. Two features A and B are marked in the given political map of India. Identify	[2]

these features with the help of the following information and write their correct names on the lines marked on the map.

- a. The place where Congress Session was held in 1920
- b. The place where Jallianwala Bagh massacre took place

Section C

26 On the outline map of India given below, mark and label the locations of the following dams [3]

1. Hirakud dam
2. Tungabhadra dam
3. Bhakra Nangal dam



27 Give a comparative analysis between Belgium and India in the sphere of area. [3]

28 Secularism is not an ideology of some political parties or persons, but it is one of the foundations of our country. Examine the statement. [3]

29 "The credit activities of the informal sector should be discouraged." Support the statement with arguments. [3]

30 Compare the views of liberals and conservatives. [3]

31 Gujarat and Maharashtra have many river water dams and reservoirs but these states were flooded extensively in 2006. What was the reason? [3]

Section D

32 **Read the text carefully and answer the questions:** Over the forty years between 1973 - 74 and 2013 - 14, while production in all the three sectors has increased, it has increased the most in the tertiary sector. As a result, in the year 2013 - 14, the tertiary sector has emerged as the largest producing sector in India replacing the primary sector. Tertiary sector becoming so important in India. There could be several reasons. First, in any country several services such as hospitals, educational institutions, post and telegraph services, police stations, courts, village administrative offices, municipal corporations, defence, transport, banks, insurance companies, etc. are required. These can be considered as basic services. In a developing country the government has to take responsibility for the provision of these services. Second, the development of agriculture and industry leads to the development of services such as transport, trade, storage and the like. Greater the development of the primary and secondary sectors, more would be the demand for such services. Third, as income levels rise, certain sections of people start demanding many more services like eating out, tourism, shopping, private hospitals, private schools, professional training etc. Fourth, over the past decade or so, certain new services such as those based on information and communication technology have become important and essential. The production of these services has been rising rapidly. [4]

1. **The tertiary sector becoming so important in India.** Identify the reasons with regard to the given statement.
2. The given extract is throwing light on which of the main aspects of the economy?
3. Why **Webmail** can not be considered as basic service
4. What could be the possible reason for the increase in the demand for these services like eating out, tourism, shopping, private hospitals, private schools, professional training, etc.?

33 **Read the source given below and answer the questions that follow:** Artists in the [4]

eighteenth and nineteenth centuries found a way out by personifying a nation. In other words, they represented a country as if it were a person. Nations were then portrayed as female figures. The female form that was chosen to personify the nation did not stand for any particular woman in real life; rather it sought to give the abstract idea of the nation a concrete form. That is, the female figure became an allegory of the nation. During the French Revolution artists used the female allegory to portray ideas such as Liberty, Justice and the Republic. These ideals were represented through specific objects or symbols. The attributes of Liberty are the red cap, or the broken chain, while Justice is generally a blindfolded woman carrying a pair of weighing scales. Female allegories were invented by artists in the nineteenth century to represent the nation. In France, she has christened Marianne, a popular Christian name, which underlined the idea of a people's nation. Her characteristics were drawn from those of Liberty and the Republic – the red cap, the tricolour, the cockade. Statues of Marianne were erected in public squares to remind the public of the national symbol of unity and to persuade them to identify with it. Marianne images were marked on coins and stamps. Similarly, Germania became the allegory of the German nation. In visual representations, Germania wears a crown of oak leaves, as the German oak stands for heroism. **Answer the following MCQs by choosing the most appropriate option:**

1. Why were Female allegories invented by artists?
 - a. Representation of the nation.
 - b. Representation of heroism.
 - c. Representation of Imperialism.
 - d. Representation of the modern state.
2. Which of the following is an allegory for 'liberty'?
 - a. Crown of Oak
 - b. Olive Branch
 - c. Red Cap
 - d. Sword
3. What does a blindfolded woman carrying a pair of weighing scales symbolise?
 - a. Peace
 - b. Justice
 - c. Equality
 - d. Liberty
4. Which of the following is not true with respect to "Allegory"?
 - a. It is a symbol representing an abstract idea.
 - b. It is an idea expressed through a person or a thing.
 - c. An allegorical story has two meanings, one literal and one symbolic.
 - d. Artist became an allegory of a nation.

34

Read the text given below and answer the questions that follow: Red and Yellow Soils: This type of soil develops on crystalline igneous rocks in areas of low rainfall in the eastern and southern parts of the Deccan plateau. These soils develop a reddish colour due to diffusion of iron in crystalline and metamorphic rocks. It looks yellow when it occurs in a hydrated form. Found in parts of Odisha, Chhattisgarh, southern parts of the middle Ganga plain and along the piedmont zone of the Western Ghats. **Arid Soils:** Arid soils range from red to brown in colour. This soil is generally sandy in texture and saline in nature. In some areas, the salt content is very high and common salt is obtained by evaporating the water. Arid soil lacks humus and moisture. The lower horizons of the soil are occupied by Kankar because of the increasing calcium content downwards. The Kankar layer formations in the bottom horizons restrict the infiltration of water. **Forest Soils:** These soils are found in the hilly and mountainous areas where sufficient rain forests are available. The soil texture varies according to the mountain environment where they are formed. They are loamy and silty in valley sides and coarse - grained in the upper slopes. In the snow - covered areas of Himalayas, these soils experience denudation and are acidic with low humus content. The soils found in the lower parts of the valleys particularly on the river terraces and alluvial fans are fertile. **Answer the following MCQs by choosing the most appropriate option:**

1. Read the statements about arid soil and choose the incorrect one.
 - a. It is loose and sandy in nature.
 - b. It is found in arid and semi - arid climatic conditions.
 - c. It is infertile but can be used by irrigation facilities.

[4]

- d. They are well - known for their capacity to hold moisture.
2. Alluvial soil is rich in potash. Similarly, red soil is rich in _____.
- a. Phosphorous b. Ferric oxide c. Magnesium d. Lime
3. The forest soils are loamy and silty in _____ and coarse - grained in the _____.
- a. valley sides, upper slopes c. upper slopes, valley sides
b. Himalayan regions, valley sides d. none of these
4. Taking a hint from the given picture, choose the incorrect option.



- a. This soil is generally sandy in texture and saline in nature.
b. The lower horizons of the soil are occupied by Kankar
c. This soil range from red to brown in colour.
d. This soil develops a reddish colour due to the diffusion of iron.

Section E

35	How are the powers divided between the states and centre? Explain with examples. or	[5]
35A	What is Coalition Government? What is its impact on Indian politics?	[5]
36	Why is sustainable development essential? How does it help to prevent environmental degradation? or	[5]
36A	Define per capita income. What are the limitations of the per capita income criterion of development?	[5]
37	Why did Gandhiji decide to launch a nationwide Satyagraha against the proposed Rowlatt Act of 1919? How was it organized? Explain. or	[5]
37A	How did different social groups participate in the Civil Disobedience Movement? Explain with examples.	[5]
38	Why is agriculture called the mainstay of Indian economy? or	[5]
38A	Explain any five technological and institutional reforms in Indian agriculture.	[5]



**Bhagwan Mahaveer Public Sr.
Sec School, Banga
TERM- I EXAM
Class 10th
Hindi (085)**

समय : 3 घंटे

अधिकतम अंक: 80

निर्देश:

1. इस प्रश्न-पत्र के दो खंड है क और ब
2. खंड अ में वस्तुपरक प्रश्न पूछे जाएंगे।
3. खंड ब में वर्णनात्मक प्रश्न पूछे जाएंगे। प्रश्नों में आंतरिक विकल्प दिए जाएंगे।

खंड क (वस्तुपरक प्रश्न)
(अपठित बोध)

1. निम्नलिखित गद्यांशों को ध्यानपूर्वक पढ़कर किन्हीं दो के आधार पर सही विकल्प चुनकर लिखिए: (1X5=5)

जल और मानव जीवन का संबन्ध अत्यन्त घनिष्ठ है। वास्तव में जल ही जीवन है। बचपन से ही हम जल की उपयोगिता, शीतलता और निर्मलता के कारण उसकी ओर आकर्षित होते रहे हैं। किंतु नल के नीचे नहाने और जलाशय में डुबकी लगाने में जमीन-आसमान का अंतर है। प्रतिदिन सागरों, नदियों और झीलों में तैरकर मनोविनोद करते हैं और साथ ही अपना शरीर भी स्वस्थ रखते हैं। स्वच्छ और शीतल जल में तैरना तन को स्फूर्ति ही नहीं मन को शान्ति भी प्रदान करता है। तैराकी आनंद की वस्तु होने के साथ साथ हमारी आवश्यकता भी है। नदियों के आसपास गाँव के लोग सड़क मार्ग न होने पर एक दूसरे से तभी मिल सकते हैं। जब उन्हें तैरना आता हो अथवा नदियों में नाव हो। प्राचीन काल में नायें कहाँ थी? तब तो आदमी को तैरकर ही नदियों को पार करना पड़ता था किंतु तैरने के लिए आदिम मनुष्य को निश्चय ही प्रयत्न और परिश्रम करना पड़ा होगा, क्योंकि उसमें अन्य प्राणियों की तरह तैरने की जन्मजात क्षमता नहीं है। जल में मछली आदि जलजीवों के स्वच्छन्द विचरण करते देख मनुष्य ने उसी प्रकार तैरना सीखने का प्रयत्न किया और धीरे-धीरे उसने इस कार्य में इतनी निपुणता प्राप्त कर ली कि आज तैराकी एक कला के रूप में गिनी जाने लगी। विश्व में जो भी खेल प्रतियोगिताएं आयोजित की जाती हैं उनमें तैराकी प्रतियोगिता अनिवार्य रूप से सम्मिलित की जाती है।

क. तैराकी के द्वारा क्या लाभ प्राप्त होते हैं ?

- तैराकी के द्वारा मनोविनोद, शारीरिक स्फूर्ति व मानसिक शांति प्राप्त होते हैं।
- तैराकी के द्वारा शीतलता मिलती है।
- तैराकी के द्वारा प्रतियोगिता में इनाम मिलता है।
- तैराकी के द्वारा हम एक कला सीखते हैं।

- तैराकी में निपुणता प्राप्त करना वे आवश्यक समझे जाते थे।
- तैराकी को एक जन्मजात क्षमता के रूप में समझे जाते थे।
- नदियों के आसपास रहनेवाले गाँव के लोग एक दूसरे तक पहुँचने के लिए सड़क मार्ग न होने पर पानी में तैरते थे।
- प्राचीन मानव नदी-नालों के बीच जन्मे थे।

ग. आदिमानव को तैराकी की प्रेरणा किससे और कैसे मिली होगी?

- आदिमानव को तैराकी की प्रेरणा पक्षियों से मिली।
- आदिमानव को जलचरों के द्वारा तैराकी की प्रेरणा मिली होगी।
- आदिमानव को तैराकी की प्रेरणा हवाई जहाजों से मिली।
- इनमें से कोई नहीं।

घ. मनुष्य के लिए तैराकी कैसे प्राप्त हुई ?

- मनुष्य को जलचरों को देखकर और निरंतर अभ्यास से यह कला प्राप्त हुई।
- हमेशा नदी नालों में डूबने से तैराकी प्राप्त हुई।
- मनुष्य को अपने बुद्धिबल से तैराकी प्राप्त हुई।
- मनुष्य को अपनी आत्मीयता से यह कला प्राप्त हुई।

ड. जल और मानव जीवन का संबन्ध अत्यंत घनिष्ठ है। कैसे?

- जल ही जीवन है।
- बचपन से ही हम जल की उपयोगिता, शीतलता और निर्मलता के कारण उसकी ओर आकर्षित होते रहे हैं।
- किंतु नल के नीचे नहाने और जलाशय में डुबकी लगाने में जमीन-आसमान का अंतर है।
- सभी विकल्प सही है।

(2) यह घटना सन् 1899 की है। उन दिनों कोलकोत्ता में प्लेग हुआ था। शायद ही कोई ऐसा घर बचा था जहाँ बीमारी न पहुँची हो। ऐसी विकट स्थिति में भी स्वामी विवेकानंद और उनके कई शिष्य रोगियों की सेवा श्रुषा में जुटे हुए थे। वे अपने हाथों से नगर की गलियाँ और बाजार साफ करते थे और जिस घर में प्लेग का मरीज रहता था, उन्हें दवा आदि देकर उनका उपचार करते थे। उसी दौरान कुछ लोग स्वामी विवेकानंद के पास आए। उनका मुखिया बोला, स्वामीजी, इस धरती पर पाप बढ़ गया है इसलिए प्लेग की महामारी के रूप में भगवान लोगों को दंड दे रहे हैं। पर आप ऐसे लोगों को बचाने का यत्न कर रहे हैं। ऐसा करके आप भगवान के कार्यों में बाधा डाल रहे हैं। मंडली के मुखिया की ऐसी बातें सुनकर स्वामीजी गंभीरता से बोले, सबसे पहले तो मैं आप सब विद्वानों को नमस्कार करता हूँ। इसके बाद स्वामीजी बोले, आप सब यह तो जानते ही होंगे कि मनुष्य इस जीवन में अपने कामों के कष्ट

प्राचीन काल में तैराकी प्राप्त के लिए आवश्यक थी। क्यों

है और तड़प रहा है, यदि दूसरा व्यक्ति उसके घावों पर मरहम लगा देता है तो वह स्वयं ही पुण्य का अधिकारी बन जाता है। अब यदि आप के अनुसार प्लेग से पीड़ित लोग पाप के भोगी हैं तो हमारे कार्यकर्ता इन लोगों की मदद कर रहे हैं वे तो पुण्य की भागी बन रहे हैं। बताइए कि इस संदर्भ में आप को क्या कहना है? उनकी बात सुनकर लोग भौचक्का रह गए और चुपचाप सिर झुकाकर यहाँ से चले गए। (1X5-5)

1. कलकत्ता में कौन सी महामारी फैली थी? और कब?

(क) प्लेग, 1899 (ख) प्लेग, 8199

(ग) प्लेग 1988 (घ) प्लेग. 1989

2. महामारी के विषय में लोगों की धारणा क्या थी?

(क) पापियों को दंड देने के लिए प्लेग आया है।

(ख) पापी लोग प्लेग के शिकार बन जाते हैं।

(ग) इस धरती पर पाप बहुत बढ़ गया है इसलिए प्लेग की महामारी के रूप में भगवान दंड दे रहे हैं।

(घ) पापी लोगों को इस धरती से भगाना चाहिए

3. विवेकानंद के द्वारा मरीजों की सेवा करने पर मुखिया ने क्या कहा ?

(क) मुखिया ने कहा कि मरीजों की सेवा करना पाप है। (ख) मुखिया ने कहा कि भगवान जो कुछ करते हैं, उसमें बाधा मत डालना।

(ग) मुखिया ने कहा कि मरीजों की निंदा न करो।

(घ) मुखिया ने कहा कि मरीजों को बुरा मत समझो।

4. मनुष्य कब पुण्य का अधिकारी बन जाता है ?

(क) परोपकार करने पर पुण्य का अधिकारी बन जाता है।

(ख) दूसरों को कुछ देने पर पुण्य का अधिकारी बन जाता है।

(ग) दूसरों से कुछ लेने पर पुण्य का अधिकारी बन जाता है।

(घ) एक पीड़ित व्यक्ति के घावों पर दूसरे व्यक्ति द्वारा मरहम लगाने पर वह पुण्य का अधिकारी बन जाता है।

5. स्वामी विवेकानंद किस प्रकार मरीजों की सेवा करते थे ?

(क) घर-घर जाकर मरीजों का उपचार करते थे।

(ख) अच्छे भोजन देकर मरीजों का उपचार करते थे।

(ग) अच्छे घर बनाकर मरीजों का उपचार करते थे।

(घ) वे अपने हाथों से नगर की गलियों और बाज़ार साफ करते थे और जिस घर में प्लेग का कोई मरीज होता था, उन्हें दवा देकर उनका उपचार करते थे।

(व्यवहारिक व्याकरण)

3. निम्नलिखित प्रश्नों में से निर्देशानुसार किन्हीं चार के विकल्प चुनकर लिखिए। (1x4=4)

(1) थका हारा मजदूर लेटते ही सो गया। (रेखांकित पदबंध का प्रकार बताइए)

(क) संज्ञा पदबंध (ख) सर्वनाम पदबंध (ग) विशेषण पदबंध (घ) क्रिया पदबंध

(2) वह इधर-उधर देखता हुआ चल रहा था। (रेखांकित पदबंध का प्रकार बताइए)

(क) संज्ञा पदबंध

(ख) सर्वनाम पदबंध

(ग) क्रिया विशेषण पदबंध

(घ) क्रिया पदबंध

(3) बूढ़ा धीरे-धीरे लंगड़ाता हुआ चल रहा था (इसमें क्रियाविशेषण पदबंध चुनकर लिखिए)

(क) बूढ़ा धीरे धीरे (ख) चल रहा था (ग) धीरे-धीरे लंगड़ाता हुआ (घ) धीरे-धीरे लंगड़ाता हुआ चल रहा था।

(4) फटे पुराने वस्त्रों वाला कोई दरवाजे पर खड़ा है_ रेखांकित पदबंध का भेद बताइए।

(क) संज्ञा पदबंध (ख) सर्वनाम पदबंध (ग) विशेषण पदबंध (घ) क्रिया पदबंध

(5) धीरे-धीरे नाव पानी में डूबती चली गई (रेखांकित का पदबंध बताइए।)

(क) संज्ञा पदबंध (ख) सर्वनाम पदबंध (ग) क्रिया पदबंध (घ) क्रियाविशेषण पदबंध

4. निम्नलिखित प्रश्नों में से किन्हीं चार के विकल्प चुनकर लिखिए। (1x4=4)

(1) सालाना इम्तिहान में मैं पास हो गया और दर्जे में प्रथम आया। रूपांतरित करने पर इस वाक्य का मिश्र वाक्य होगा -

(क) सालाना इम्तिहान में मैं पास होकर दर्जे में प्रथम आया।

(ख) सालाना इम्तिहान हुआ , मैं पास हो गया और दर्जे में प्रथम आया।

(ग) मैं पास हो गया और दर्जे में प्रथम आया क्योंकि सालाना इम्तिहान हुआ।

(घ) जब सालाना इम्तिहान हुआ तो मैं उसमें पास हो गया और दर्जे में प्रथम आया।

(2) निम्नलिखित वाक्यों में संयुक्त वाक्य है:

(क) संसार में रचना कैसे भी हुई हो लेकिन धरती किसी एक की नहीं है।

(ख) सहसा नारियल के झुरमुटो में उसे एक आकृति कुछ साफ हुई।

(ग) बार-बार ततारा का याचना भरा चेहरा उसकी आंखों में तैर जाता था।

(घ) मेरे जीवन में यह पहली बार है कि मैं इस तरह से विचलित हुआ हूँ।

(3) सूर्य निकला और प्रकाश हो गया का सरल वाक्य क्या होगा:

(क) जैसे ही सूर्य निकला वैसे ही प्रकाश हो गया।

(ख) सूर्य निकलते ही प्रकाश हो गया।

(ग) जब सूर्य निकलता है तब प्रकाश होता है।

(घ) सूर्य निकला अतः प्रकाश हो गया।

(4) एक जमाना था कि लोग आठवां दर्जा पास करके नायब तहसीलदार हो जाते थे। (रचना के आधार पर वाक्य भेद लिखिए)

(क) मिश्रवाक्य (ख) सरल वाक्य

(ग) संयुक्त वाक्य (घ) निषेधवाचक वाक्य

(5) नूह ने उसकी बात सुनी और दुखी हो मुद्दत तक रोते रहे : इस वाक्य का सरल वाक्य है

(क) जब नूह ने उसकी बात सुनी तब वह दुखी हो गए और मुद्दत तक रोते रहे।

(ख) नूह उसकी बात सुनकर दुखी हो मुद्दत तक रोते रहे। (ग)

नूह ने दुखी होकर उसकी बात सुनी और मुद्दत तक रोते रहे।

(घ) चूंकि नूह ने उसकी बात सुनी इसलिए वह दुखी हो मुद्दत तक रोते रहे।

5. निम्नलिखित प्रश्नों में से निर्देशानुसार किन्हीं चार के विकल्प चुनकर लिखिए। (1x4=4)

(1) हरफनमौला (विग्रह कर समास के नाम लिखिए)

(क) हरफन में मौला - तत्पुरुष समास

(ख) हरफन का मौला- अव्ययीभाव समास

(ग) हरफन से मौला- तत्पुरुष समास

(घ) हरफन के लिए मौला -तत्पुरुष समास

(2) उत्तर पद प्रधान होता है:

(क) बहुव्रीहि समास का (ख) अव्ययीभाव समास का

(ग) तत्पुरुष समास का (घ) द्वंद्व समास का

(3) भला है जो मनुष्य (समस्त पद बनाकर समास के नाम लिखिए।)

(क) भलमानस- अव्ययीभाव समास

(ख) भलमानस- द्वंद्व समास

(ग) भलमानस -तत्पुरुष समास

(घ) भलमानस- कर्मधारय समास

(4) चक्र धारण करने वाला- (समस्त पद बनाकर समास के नाम लिखिए।)

(क) चक्रधर (विष्णु)- अव्ययीभाव समास

(ख) चक्रधर (विष्णु) -द्वन्द्व समास

(ग) चक्रधर (विष्णु)- बहुव्रीहि समास

(घ) इनमें से कोई नहीं।

(5) वृद्धों के लिए आश्रम (समस्त पद बनाकर समास के नाम लिखिए।)

(क) वृद्धाश्रम -तत्पुरुष समास (ख) वृद्धाश्रम- द्वंद्व समास

(ग) वृद्धाश्रम- बहुव्रीहि समास (घ) वृद्धाश्रम- द्विगु समास

6. निम्नलिखित में से कोई चार मुहावरों के उचित विकल्प चुनकर लिखिए। (1x4=4)

(क) कक्षा में प्रथम स्थान पाने के लिए उसने.....

दिया। रिक्त स्थान की पूर्ति निम्नलिखित मुहावरों में से कीजिए

(i) नाकों चने चबाना

(ii) अपना रंग दिखाना

(iii) ओखली में सिर देना

(iv) रात दिन एक करना

(ख) निर्बल व्यक्ति शक्तिशाली आदमी की हर कड़वी बात को.....जाता है। रिक्त स्थान की पूर्ति सटीक मुहावरे से कीजिए

(i) तेली के बैल की तरह हो

(ii) जहर के घूँट की तरह पी

(iii) चूना लगाने की तरह

(iv) मधुर रस की तरह पी

(ग) आटे दाल का भाव मालूम होना मुहावरे का अर्थ है:

(i) किसी को सबक सिखाना

(ii) कठिनाइयों का ज्ञान होना

(iii) चीजों के भाव पता चलना

(iv) खरीदारी के गुरों का ज्ञान होना

(घ) आलोचक का कार्य किसी भी रचना में.....रह गया है।

उपयुक्त मुहावरे से रिक्त स्थान की पूर्ति कीजिए।

(i) मीन मेख निकालना

(ii) मुँह की खाना

(iii) विष उगलना

(iv) शिकंजा कसना

(ङ) बड़े भाई का रौद्र रूप देखकर.....जाते हैं। उपयुक्त मुहावरे से रिक्त स्थान की पूर्ति कीजिए।

(i) लाल-पीला होना

(ii) प्राण सूख जाना

(iii) धूल झोंकना

(iv) आसमान सिर पर उठाना

(च) गणित का का गृह कार्य करना मुझे..... प्रतीत होता है:

उपयुक्त मुहावरे से रिक्त स्थान पूर्ण करें।

(i) फूलों की सेज

(ii) लोहे के चने चबाना

(iii) गड़े मुर्दे उखाड़ना

(iv) अंधे की लकड़ी

7. निम्नलिखित पठित काव्यांश के आधार पर पूछे गए प्रश्नों के उचित विकल्प चुनकर लिखिए। (1x5=5)

क. गिरि का गौरव गाकर झर - झर

मद में नस - नस उत्तेजित कर

मोती की लड़ियों से सुंदर

झरते हैं झाग भरे निर्झर!

गिरिवर के उर से उठ- उठ कर

उच्च आकांक्षाओं से तरुवर

हैं झांक रहे नीरव नभ पर

अनिमेष, अटल, कुछ चिंता पर

1. गिरि का गौरव गान कौन कर रहा है?

- (क) पत्थर (ख) वृक्ष
(ग) झरने (घ) नदियाँ

2. झरनों की तुलना किससे की गई है

- (क) झाग से। (ख) दर्पण से।
(ग) दूध से (घ) मोती की लडियों से

3. पर्वत के हृदय से उठकर वृक्ष किसे देख रहे हैं?

- (क) तालाब को। (ख) झरनों को
(ग) आकाश को (घ) नदियों को

4. वृक्षों की स्थिति कैसी है ?

- (क) वे एकटक देख रहे हैं। (ख) वे अटल खड़े हैं।
(ग) वे कुछ चिंतित से हैं। (घ) ये सभी।

5. इस कविता के कवि का क्या नाम है ?

- (क) सियाराम शरण गुप्त -पर्वत प्रदेश में पावस
(ख) मैथिली शरण गुप्त -पर्वत प्रदेश में पावस
(ग) कैफी आजमी -पर्वत प्रदेश में पावस
(घ) सुमित्रानंदन पंत-पर्वत प्रदेश में पावस

8. निम्नलिखित पठित काव्यांश के आधार पर पूछे गए प्रश्नों के उचित विकल्प चुनकर लिखिए। (1x2=2)

कंपनी बाग के मुहाने पर
धर रखी गई है यह 1857 की तोप
इसकी होती है बड़ी सम्हाल,
विरासत में मिले कंपनी बाग की तरह
साल में चमकाई जाती है दो बार।
सुबह-शाम कंपनी बाग में आते हैं
बहुत से सैलानी
उन्हें बताती है यह तोप
कि मैं बड़ी जबर
उड़ा दिए थे मैंने
अच्छे-अच्छे सूरमाओं के धज्जे
अपने ज़माने में

1. तोप ने अपने जमाने में क्या किया था?

- (क) बड़े-बड़े युद्ध जीते थे।
(ख) शत्रुओं से हार गई थी।
(ग) अच्छे-अच्छे सूरमाओं के धजे उड़ा दिए थे।
(घ) कई किलों को ढहाया है।

2. तोप की संभाल क्यों की जाती है?

- (क) उसके द्वारा युद्ध लड़ा जाएगा।
(ख) वह बहुत कीमती थी।

- (ग) वह विरासत है।
(घ) इन में से कोई नहीं।

9. निम्नलिखित पठित गद्यांश के आधार पर पूछे गए प्रश्नों के उचित विकल्प चुनकर लिखिए। (1*5=5)

क. कई सालों से बड़े बड़े बिल्डर समंदर को पीछे धकेल कर उसकी ज़मीन को हथिया रहे थे। बेचारा समंदर लगातार सिमटता जा रहा था। पहले उसने अपनी फैली हुई टाँगें समेटी, थोड़ा सिमटकर बैठ गया। फिर जगह कम पड़ी तो उकड़ूँ बैठ गया। फिर खड़ा हो गया...जब खड़े रहने की जगह कम पड़ी तो उसे गुस्सा आ गया। जो जितना बड़ा होता है उसे उतना ही कम गुस्सा आता है। परंतु आता है तो रोकना मुश्किल हो जाता है, और यही हुआ, उसने एक रात अपनी लहरों पर दौड़ते हुए तीन जहाज़ों को उठाकर बच्चों की गेंद की तरह तीन दिशाओं में पेंफक दिया। एक वर्ली के समंदर के किनारे पर आकर गिरा दूसरा बांद्रा में कार्टर रोड के सामने आँधे मुँह और तीसरा गेट वे ऑफ़ इंडिया पर टूट फूटकर सैलानियों का नज़ारा बना बावजूद कोशिश, वे फिर से चलने-फिरने के काबिल नहीं हो सके।

1. बड़े-बड़े बिल्डरों का समुद्र के साथ कैसा व्यवहार था

- (क) वे समुद्र को स्वच्छ कर रहे थे।
(ख) समुद्र को पीछे धकेल कर उसकी जमीन हथिया रहे थे।
(ग) समुद्र को गंदा कर रहे थे।
(घ) समुद्र पर पुल बना रहे थे।

2. लगातार सिमटते समुद्र ने क्या नहीं किया?

- (क) अपनी फैली टांगें समेटीं (ख) उकड़ूँ बैठ गया।
(ग) खड़ा हो गया। (घ) उछलने लगा।

3. समुद्र के लगातार सिमटने के कर्म पर विचार कीजिए और उचित विकल्प का चयन कीजिए:

- (i) पानी का कम होना (ii) लोगों का डर
(iii) बिल्डरों द्वारा जमीन हथियाना (iv) छोटा बनने की इच्छा

- (क) (i) और (ii) (ख) (ii) और (iii)
(ग) केवल (iii) (घ) (i) और (iv)

4. निम्नलिखित कथन कारण को पढ़कर उचित विकल्प का चयन कीजिए।

कथन(A)- जो जितना बड़ा होता है, उसे उतना ही कम गुस्सा आता है।

कारण (R) - समुद्र को गुस्सा नहीं आया।

- (क) कथन तथा कारण दोनों गलत हैं।
(ख) कथन सही है किंतु कारण गलत है।
(ग) कथन गलत है किंतु कारण सही है।

(घ) कथन तथा कारण दोनों सही है और कारण कथन की सही व्याख्या करता है।

5. समुद्र के गुस्से का कारण था:

(क) लोगों द्वारा उसे गंदा किया जाना

(ख) उसकी लहरों पर बड़े-बड़े जहाज चलाना।

(ग) समुद्री जीवों को सताना

(घ) बड़े-बड़े बिल्डरों द्वारा उसकी जमीन हथियाना।

10. आज न तताँरा है न वामीरो किंतु उनकी यह प्रेमकथा घर घर में सुनाई जाती है। निकोबारियों का मत है कि तताँरा की तलवार से कार निकोबार के जो टुकड़े हुए उसमें दूसरा लिटिल अंदमान है जो कार निकोबार से आज 96 कि.मी दूर स्थित है। निकोबारी इस घटना के बाद दूसरे गाँवों में भी आपसी वैवाहिक संबंध करने लगे। तताँरो वामीरों की त्यागमयी मृत्यु शायद इसी सुखद परिवर्तन के लिए थी।

(1*2=2)

1. तताँरा वामीरो की प्रेमकथा को आज भी उस द्वीप के निवासी गर्व और श्रद्धा के साथ क्यों याद करते हैं?

(क) इन दोनों के प्रेम में त्याग, बलिदान और सच्चाई थी।

(ख) वे महान थे।

(ग) इनका प्रेम सबको अच्छा लगा।

(घ) वे ही रीति रिवाजों को बदलते थे।

2. निकोबारियों को लिटिल अंदमान के विषय में क्या कहना है?

(क) तताँरा ने विवाह संबंधी रूढ़ि को तोड़ने के लिए अपनी तलवार से दो टुकड़े कर दिए, उसमें से एक टुकड़ा लिटिल अंदमान के नाम से जाना जाता है।

(ख) लिटिल अंदमान हमेशा के लिए नष्ट हो गया।

(ग) लिटिल अंदमान के विषय में मतभेद हो गया।

(घ) इसके बाद लिटिल अंदमान अप्रत्यक्ष हो गया।

खण्ड - ब (वर्णनात्मक प्रश्न)

11. निम्नलिखित प्रश्नों में से किन्हीं दो प्रश्नों के उत्तर 25-30 शब्दों में लिखिए। (2*3=6)

1. मीरा श्री कृष्ण को पाने के लिए क्या-क्या कार्य करने को तैयार है?

2. कबीर ने कस्तूरी मृग का उदाहरण क्यों दिया है?

3. तोप कविता में कवि ने तोप की कौन-कौन सी दो स्थितियाँ दिखाई गई हैं। उनके द्वारा कवि क्या संदेश देना चाहता है?

12. निम्नलिखित प्रश्नों में से किन्हीं दो प्रश्नों के उत्तर 25-30 शब्दों में लिखिए।

1. लेखक की मां ने उसे क्या-क्या शिक्षाएं दीं? अब कहां दूसरे के दुख से दुखी होने वाले पाठ के आधार पर लिखिए।

2. तताँरा खूब परिश्रम के बाद कहां गया और वहां के प्राकृतिक सौंदर्य का वर्णन अपने शब्दों में कीजिए।

3. बड़े भाई साहब की स्वभावगत विशेषताओं का उल्लेख कीजिए।

13. निम्नलिखित प्रश्नों में से किन्हीं दो प्रश्नों के उत्तर लिखिए (2*3=6)

(क) 'समाज में रिश्तो से अधिक महत्व धन का है।' हरिहर काका कहानी के संदर्भ में इस कथन की पुष्टि कीजिए।

(ख) हरिहर काका के प्रति उनके परिवार के व्यवहार पर अपने विचार लिखिए और यह भी बताइए कि बुजुर्गों के प्रति कैसा व्यवहार करना चाहिए?

(ग) हरिहर काका के गांव में यदि मीडिया की पहुंच होती तो उनकी क्या स्थिति होती? अपने शब्दों में लिखिए।

लेखन

14. निम्नलिखित में से किसी एक विषय पर दिए गए संकेत बिन्दुओं के आधार पर 100-150 शब्दों में अनुच्छेद लिखिए: (1*5=5)

(क) संचार साधन

• संचार के प्रमुख साधन

• संचार साधनों का जाल

• घर बैठे दूर-दराज की खबर मिनटों में

(ख) वर्तमान खेती में जहर

• दवाओं और कीटनाशकों का भरपूर उपयोग

• बंजर भूमि का फैलाव

• जैविक खेती की माँग

(ग) मित्र हो तो ऐसा

• सच्चा दोस्त कौन

• हर मुसीबत का साथी

• प्रशंसा के लायक

15. (क) आप गरिमा / अखिलेश हैं। आप अपने क्षेत्र में होने वाली असमय बिजली कटौती से परेशान हैं। इससे होने वाली कठिनाइयों की ओर बिजली विभाग का ध्यान आकर्षित करने के लिए हिन्दी समाचार-पत्र के संपादक के नाम लगभग 120 शब्दों में पत्र लिखिए। (1*5=5)

अथवा

(ख) विद्यालय की विज्ञान प्रयोगशाला में छात्रों के अनुपात में उपकरणों की कमी के कारण, उन्हें प्रयोग करने में कठिनाई का सामना करना पड़ता है। इस समस्या से अवगत कराते हुए तथा नए उपकरण मंगवाने का निवेदन करते हुए प्रधानाचार्य को पूरी कक्षा की ओर से लगभग 100 शब्दों में प्रार्थना पत्र लिखिए।

16. आप पावनी/विपुल हैं। आप 'निवासी कल्याण संघ के सचिव हैं। आप सोसायटी में पेड़-पौधे लगाकर उसे हरा-भरा रखना चाहते हैं। इसके लिए आगामी रविवार को वृक्षारोपण समारोह का आयोजन सोसायटी में किया जा रहा है। इसकी जानकारी देते हुए लगभग 50 शब्दों में सूचना लिखिए।

(1×4=4)

अथवा

आप सुमिरन/परमजीत हैं और विद्यालय के हिंदी विभाग के अध्यक्ष हैं। विद्यालय में संस्कृति ज्ञान परीक्षा का आयोजन किया जा रहा है। छात्रों को इसमें भाग लेने के लिए सूचित करते हुए लगभग 50 शब्दों में सूचना तैयार कीजिए।

17. कोई कंपनी बाज़ार में नया 'ज्योमैट्री बॉक्स' उतारना चाहती है। उसकी बिक्री के लिए एक विज्ञापन लगभग 50 शब्दों में तैयार कीजिए। (1×3=3)

अथवा

एक आयुर्वेद कंपनी ने स्वास्थ्य के लिए हेल्थ टोन नाम की एक दवा बनाई है। उसकी बिक्री के लिए एक आकर्षक विज्ञापन तैयार करो।

18. निम्नलिखित विषयों में से किसी एक विषय पर 100-120 शब्दों में लघु-कथा लिखिए : (1×5=5)

(क) देरी होने के कारण मैं तेज़ - तेज़ चलकर विद्यालय समय पर पहुँचने का प्रयास कर रही थी कि अचानक

अथवा

(ख) अपने क्षेत्र में एक पार्क विकसित करने के लिए नगर निगम अधिकारी को लगभग 100 शब्दों में ईमेल लिखिए।